

Product datasheet for PH305477

MARCHF8 (NM_001002266) Human Mass Spec Standard

Product data:

Product Type:	Mass Spec Standards
Description:	MARCH8 MS Standard C13 and N15-labeled recombinant protein (NP_001002266)
Species:	Human
Expression Host:	HEK293
Expression cDNA Clone or AA Sequence:	RC205477
Predicted MW:	32.9 kDa
Protein Sequence:	>RC205477 protein sequence Red=Cloning site Green=Tags(s)

MSMPLHQISAIPSQDAISARVYRSKTKEKEREEQNEKTLGHFMSHSSNISKAGSPPSASAPVSSFRT
SITPSSQDICRICHCEGDDESPITPCHCTGSLHFVHQACLQQWIKSSDTRCCCELCKYEFIMETKLKPLR
KWEKLMQMTSSERRKIMCSVTFHVIAITCVVWSLYVLIDRTAEEIKQGQATGILEWPFWTKLVVVAIGFTG
GLLFMYVQCKVYVQLWKRLKAYNRVIYVQNPETSCKNIFEKSPLTEPNFENKHGHGICHSDTNSSCCTE
PEDTGAEIIHV

TRTRPLEQKLISEEDLAANDILDYKDDDDKV

Tag:	C-Myc/DDK
Purity:	> 80% as determined by SDS-PAGE and Coomassie blue staining
Concentration:	>0.05 µg/µL as determined by microplate BCA method
Labeling Method:	Labeled with [U- ¹³ C ₆ , ¹⁵ N ₄]-L-Arginine and [U- ¹³ C ₆ , ¹⁵ N ₂]-L-Lysine
Buffer:	25 mM Tris-HCl, 100 mM glycine, pH 7.3
Storage:	Store at -80°C. Avoid repeated freeze-thaw cycles.
Stability:	Stable for 3 months from receipt of products under proper storage and handling conditions.
RefSeq:	NP_001002266
RefSeq Size:	4812
RefSeq ORF:	873
Synonyms:	c-MIR; CMIR; MARCH-VIII; MARCH8; MIR; RNF178
Locus ID:	220972



[View online »](#)

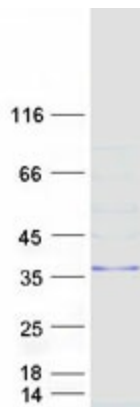
UniProt ID: [Q5T0T0](#), [A0A024R7U2](#)

Cytogenetics: 10q11.21-q11.22

Summary: MARCF8 is a member of the MARCF family of membrane-bound E3 ubiquitin ligases (EC 6.3.2.19). MARCF enzymes add ubiquitin (see MIM 191339) to target lysines in substrate proteins, thereby signaling their vesicular transport between membrane compartments. MARCF8 induces the internalization of several membrane glycoproteins (Goto et al., 2003 [PubMed 12582153]; Bartee et al., 2004 [PubMed 14722266]).[supplied by OMIM, Apr 2010]

Protein Families: Druggable Genome, Transmembrane

Product images:



Coomassie blue staining of purified MARCF8 protein (Cat# [TP305477]). The protein was produced from HEK293T cells transfected with MARCF8 cDNA clone (Cat# [RC205477]) using MegaTran 2.0 (Cat# [TT210002]).