

Product datasheet for PH305473

RASA1 (NM_002890) Human Mass Spec Standard

Product data:

Product Type:	Mass Spec Standards
Description:	RASA1 MS Standard C13 and N15-labeled recombinant protein (NP_002881)
Species:	Human
Expression Host:	HEK293
Expression cDNA Clone or AA Sequence:	RC205473
Predicted MW:	116.4 kDa
Protein Sequence:	>RC205473 protein sequence Red=Cloning site Green=Tags(s)

MMAEAGSEEGPVTAGAGGGGAAAGSSAYPAVCRVKIPAALPVAAPYPGLVETGVAGTLGGGAALGSE
FLGAGSVAGALGGAGLTGGGTAAGVAGAAAGVAGAAVAGPSGDMALTKLPTSLLAETLPGGGFPPLPPP
PYLPPLGAGLGTVDEGSLDGPYEYEEVAIPLTAPPTNQWYHGKLDRTIAEERLRQAGKSGSYLIRESD
RRPGSFVLSFLSQMNVVNHFRIIAMCGDYIIGRRFSSLDLIGYYSHVSCLLKGEKLLYPVAPPEPVED
RRRVRAILPYTKVPDTDEISFLKGMFIVHNELEDGMMWVTNLRDEQGLIVEDLVEEVGREEDPHEGKI
WFHGKISKQEAYNLLMTVGQVCSFLVRPSDNTPGDYSLYFRTNENIQRFKICPTPNNQFMMGGRYNSIG
DIIDHYRKEQIVEGYLKEPVPMDQEQVLNDTVDGKEIYNTIRRKTKDAFYKNIYKKGKGLKGGKGRW
KNLYFIFILEGSDAQLIYFESEKRATKPKGLIDL SVCSVYVVDLSLFGPNCQFQIVVQHFSEEHYIFYFAGE
TPEQAEDWMKGLQAF CNLRKSSPGT SNKRLRQVSSLV LHTEEAHKLPVKHFTNPYCNLYLNSVQVAKTHA
REGQNPVWSEEFVFDLPPDINRFEITL SNKTKKSKDPDILFMRCQLSRLQKGHTDEWFLLSSHPLKKG
IEPGSLRVRARYSMEKIMPEEYSEFKELILQKELHVVYALSHVCGQDRLLASILLRIFLHEKLESLLL
CTLNDREISMEDEATTLFRATTLASTLMEQYMKATATQFVHALKDSILKIMESKQSCELSPSKLEKNE
VNTNLTHLLNILSELVEKIFMASEILPPTLRYIYGCLQKSVQHKWPTNTTMRTRVVSQGFVFLRLICPAIL
NPRMFNIISDPSPIAARTLILVAKSVQNLANLVEFGAKEPYMEGVNPFIKSNKHRMIMFLDELGNVPEL
PDTTEHSRTDL SRDLAALHEICVAHSDELRTLSNERGAQQHVLKLLAITELLQQKQNYTKTNDVR

SGPTRTRPLEQKLI SEEDLAANDILDYKDDDDKV

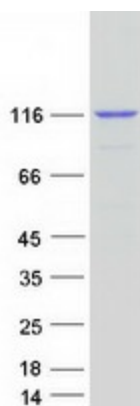
Tag:	C-Myc/DDK
Purity:	> 80% as determined by SDS-PAGE and Coomassie blue staining
Concentration:	>0.05 µg/µL as determined by microplate BCA method
Labeling Method:	Labeled with [U- ¹³ C ₆ , ¹⁵ N ₄]-L-Arginine and [U- ¹³ C ₆ , ¹⁵ N ₂]-L-Lysine
Buffer:	25 mM Tris-HCl, 100 mM glycine, pH 7.3
Storage:	Store at -80°C. Avoid repeated freeze-thaw cycles.



[View online »](#)

Stability:	Stable for 3 months from receipt of products under proper storage and handling conditions.
RefSeq:	NP_002881
RefSeq Size:	4402
RefSeq ORF:	3141
Synonyms:	CM-AVM; CMAVM; CMAVM1; GAP; p120; p120GAP; p120RASGAP; PKWS; RASA; RASGAP
Locus ID:	5921
UniProt ID:	P20936 , Q59GK3
Cytogenetics:	5q14.3
Summary:	<p>The protein encoded by this gene is located in the cytoplasm and is part of the GAP1 family of GTPase-activating proteins. The gene product stimulates the GTPase activity of normal RAS p21 but not its oncogenic counterpart. Acting as a suppressor of RAS function, the protein enhances the weak intrinsic GTPase activity of RAS proteins resulting in the inactive GDP-bound form of RAS, thereby allowing control of cellular proliferation and differentiation. Mutations leading to changes in the binding sites of either protein are associated with basal cell carcinomas. Mutations also have been associated with hereditary capillary malformations (CM) with or without arteriovenous malformations (AVM) and Parkes Weber syndrome. Alternative splicing results in two isoforms where the shorter isoform, lacking the N-terminal hydrophobic region but retaining the same activity, appears to be abundantly expressed in placental but not adult tissues. [provided by RefSeq, May 2012]</p>
Protein Families:	Druggable Genome
Protein Pathways:	Axon guidance, MAPK signaling pathway

Product images:



Coomassie blue staining of purified RASA1 protein (Cat# [TP305473]). The protein was produced from HEK293T cells transfected with RASA1 cDNA clone (Cat# [RC205473]) using MegaTran 2.0 (Cat# [TT210002]).