

Product datasheet for PH305461

ATE1 (NM_007041) Human Mass Spec Standard

Product data:

Product Type:	Mass Spec Standards
Description:	ATE1 MS Standard C13 and N15-labeled recombinant protein (NP_008972)
Species:	Human
Expression Host:	HEK293
Expression cDNA Clone or AA Sequence:	RC205461
Predicted MW:	59 kDa
Protein Sequence:	>RC205461 protein sequence Red=Cloning site Green=Tags(s) MAFWAGGSPSVVDYFPSEDFYRCGYCKNESGSRNMGWAHSMTVQDYQDLIDRGWRRSGKYVYKPVMNQT CCPQYTI RCRPLQFQPSKSHKKVLKMKLFLAKGEVPGKSCDEPMDSTMDDAVAGDFALINKLDIQCDL KTLSDDIKESLESEGKNSKKEEPQELLQSQDFVGEKLGSGEPHSHVKVHTVPKPGKGADLSKPPCRKAKE IRKERKRLKLMQNPAGELEGFQAQGHPPSLFPPKAKSNQPKSLEDLIFESLPENASHKLEVRLLVPVSFE DPEFKSSFQSFSLYVKYQVAIHQDPPDECGKTEFTRFLCSSPLEAETPPNGPDCGYGSHQYWL DGI IAVGVIDILPNCVSSVYLYYDPDYSFLSLGVYSALREIAFTRQLHEKTSQLSYYYMGFYIHSCPMMKYKG QYRPSDLLCPETYVWVPIEQCLPSLENSKYCRFNQDPEAVDEDRSTEPDRLQVFKRAIMPYGVYKKQOK DPSEEA AVLQYASLVGQKCSERMLLFRN TRTRPLEQKLI SEEDLAANDILDYKDDDDKV
Tag:	C-Myc/DDK
Purity:	> 80% as determined by SDS-PAGE and Coomassie blue staining
Concentration:	>0.05 µg/µL as determined by microplate BCA method
Labeling Method:	Labeled with [U- ¹³ C ₆ , ¹⁵ N ₄]-L-Arginine and [U- ¹³ C ₆ , ¹⁵ N ₂]-L-Lysine
Buffer:	25 mM Tris-HCl, 100 mM glycine, pH 7.3
Storage:	Store at -80°C. Avoid repeated freeze-thaw cycles.
Stability:	Stable for 3 months from receipt of products under proper storage and handling conditions.
RefSeq:	<u>NP_008972</u>
RefSeq Size:	4930
RefSeq ORF:	1554



[View online »](#)

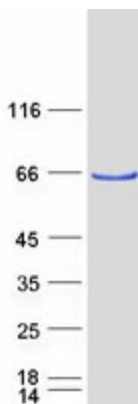
Locus ID: 11101

UniProt ID: [O95260](#), [B3KWA3](#)

Cytogenetics: 10q26.13

Summary: This gene encodes an arginyltransferase, an enzyme that is involved in posttranslational conjugation of arginine to N-terminal aspartate or glutamate residues. Conjugation of arginine to the N-terminal aspartate or glutamate targets proteins for ubiquitin-dependent degradation. Alternative splicing results in multiple transcript variants. [provided by RefSeq, Dec 2013]

Product images:



Coomassie blue staining of purified ATE1 protein (Cat# [TP305461]). The protein was produced from HEK293T cells transfected with ATE1 cDNA clone (Cat# [RC205461]) using MegaTran 2.0 (Cat# [TT210002]).