

Product datasheet for PH305446

CYP46 (CYP46A1) (NM_006668) Human Mass Spec Standard

Product data:

Product Type:	Mass Spec Standards
Description:	CYP46A1 MS Standard C13 and N15-labeled recombinant protein (NP_006659)
Species:	Human
Expression Host:	HEK293
Expression cDNA Clone or AA Sequence:	RC205446
Predicted MW:	56.8 kDa
Protein Sequence:	>RC205446 protein sequence Red=Cloning site Green=Tags(s)

MSPGLLLLGSVLLAFGLCCTFVHRARSRYEHIPGPPRPSFLLGHLPCFWKKDEVGGRVLQDVFLDWAKK
YGPVVRVNVFHKTSVIVTSPESVKKFLMSTKYNKDSKMYRALQTVFGERLFGQGLYSECNYERWHKQRRV
IDLAFSRSSLVSLMETFNEKAEQLVEILEAKADGQTPVSMQDMLTYTAMDILAKAAFGMETSMLLGAQKP
LSQAVKLMLEGITASRNTLAKFLPGKRKQLREVRESIRFLRQVGRDWWQRRREALKRGEEVPADILTQIL
KAEEGAQDDEGLLDNFVTFIAGHETSANHLAFTVMELSRQPEIVARLQAEVDEIVGSKRYLDFEDLGRLL
QYLSQVLKESLRLYPPAWGTFRLLLEETLIDGVRVPGNTPLLFSTYVMGRMDTYFEDPLTFNPDRFGPGA
PKPRFTYFPFSLGHRSCIGQQAQMEVKVVMKLLQRLEFRLVPGQRFGLEQATLKPLDPVLCTLRPRG
WQPAPPPPPC

TRTRPLEQKLISEEDLAANDILDYKDDDDKV

Tag:	C-Myc/DDK
Purity:	> 80% as determined by SDS-PAGE and Coomassie blue staining
Concentration:	>0.05 µg/µL as determined by microplate BCA method
Labeling Method:	Labeled with [U- 13C6, 15N4]-L-Arginine and [U- 13C6, 15N2]-L-Lysine
Buffer:	25 mM Tris-HCl, 100 mM glycine, pH 7.3
Storage:	Store at -80°C. Avoid repeated freeze-thaw cycles.
Stability:	Stable for 3 months from receipt of products under proper storage and handling conditions.
RefSeq:	<u>NP_006659</u>
RefSeq Size:	2138
RefSeq ORF:	1500



[View online »](#)

Synonyms: CP46; CYP46

Locus ID: 10858

UniProt ID: [Q9Y6A2](#)

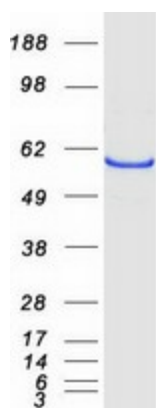
Cytogenetics: 14q32.2

Summary: This gene encodes a member of the cytochrome P450 superfamily of enzymes. The cytochrome P450 proteins are monooxygenases which catalyze many reactions involved in drug metabolism and synthesis of cholesterol, steroids and other lipids. This endoplasmic reticulum protein is expressed in the brain, where it converts cholesterol to 24S-hydroxycholesterol. While cholesterol cannot pass the blood-brain barrier, 24S-hydroxycholesterol can be secreted in the brain into the circulation to be returned to the liver for catabolism. [provided by RefSeq, Jul 2008]

Protein Families: Druggable Genome, P450

Protein Pathways: Primary bile acid biosynthesis

Product images:



Coomassie blue staining of purified CYP46A1 protein (Cat# [TP305446]). The protein was produced from HEK293T cells transfected with CYP46A1 cDNA clone (Cat# [RC205446]) using MegaTran 2.0 (Cat# [TT210002]).