

Product datasheet for PH305444

SLC25A42 (NM_178526) Human Mass Spec Standard

Product data:

Product Type:	Mass Spec Standards
Description:	SLC25A42 MS Standard C13 and N15-labeled recombinant protein (NP_848621)
Species:	Human
Expression Host:	HEK293
Expression cDNA Clone or AA Sequence:	RC205444
Predicted MW:	35.4 kDa
Protein Sequence:	>RC205444 protein sequence Red =Cloning site Green =Tags(s)

MGNVKEGPVRLHEDAEAVLSSSVSSKRDHRQVLSSLLPGALAGALAKTAVAPLDRTKIIFQVSSKRFSA
 KEAFRVLYTYLNEGFLSLWRGNSATMVRVVPYAAIQFSAHEEYKRILGSYYGFRGEALPPWPRLFAGAL
 AGTTAASLTYPDLVRRMAVTPKEMYSNIFHVFIIRISREEGLKTLYHGFMPVTLGVIPYAGLSFFTYET
 LKSLHREYSGRRQYPFERMIFGACAGLIGQSASYPLDVRRMQTAGVTGYPRASIARTLRTIVREEGA
 VRGLYKGLSMNWVGPIAVGISFTTFDLMQIMLRHLQS

TRTRPLEQKLISEEDLAANDILDYKDDDDKV

Tag:	C-Myc/DDK
Purity:	> 80% as determined by SDS-PAGE and Coomassie blue staining
Concentration:	>0.05 µg/µL as determined by microplate BCA method
Labeling Method:	Labeled with [U- ¹³ C ₆ , ¹⁵ N ₄]-L-Arginine and [U- ¹³ C ₆ , ¹⁵ N ₂]-L-Lysine
Buffer:	25 mM Tris-HCl, 100 mM glycine, pH 7.3
Storage:	Store at -80°C. Avoid repeated freeze-thaw cycles.
Stability:	Stable for 3 months from receipt of products under proper storage and handling conditions.
RefSeq:	<u>NP_848621</u>
RefSeq Size:	3279
RefSeq ORF:	954
Synonyms:	MECREN
Locus ID:	284439


[View online »](#)

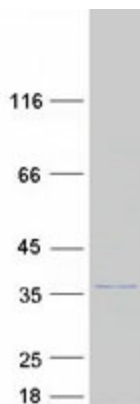
UniProt ID: [Q86VD7](#), [A0A024R7K2](#), [Q8NHH2](#)

Cytogenetics: 19p13.11

Summary: This gene encodes a solute carrier family 25 protein. Solute carrier family 25 proteins are localized to mitochondria and play critical roles in the transport of molecules across the inner mitochondrial membrane. The encoded protein is a mitochondrial transporter for coenzyme A (CoA) and adenosine 3',5'-diphosphate. [provided by RefSeq, Feb 2012]

Protein Families: Druggable Genome

Product images:



Coomassie blue staining of purified SLC25A42 protein (Cat# [TP305444]). The protein was produced from HEK293T cells transfected with SLC25A42 cDNA clone (Cat# [RC205444]) using MegaTran 2.0 (Cat# [TT210002]).