

Product datasheet for PH305435

DPP10 (NM_020868) Human Mass Spec Standard

Product data:

Product Type:	Mass Spec Standards
Description:	DPP10 MS Standard C13 and N15-labeled recombinant protein (NP_065919)
Species:	Human
Expression Host:	HEK293
Expression cDNA Clone or AA Sequence:	RC205435
Predicted MW:	90.9 kDa
Protein Sequence:	>RC205435 protein sequence Red=Cloning site Green=Tags(s)

MNQ TASVSHHIKCQPSKTIKELGNSPPQRNWKGIALLVILVVCSLITMSVILLTPDEL TNSSETRLS
LEDLFRKDFVLHDPEARWINDTDVVKSENGHVIKLNIETNATLLLENTTFVTFKASRHSVSPDLKYVL
LAYDVKQIFHYSYASYVIYNIHTREVWELNPPEVEDSVLQYAAWGVQGGQLIYIFENNIYYQPDIKSSS
LRLTSSGKEEIIFNIGIADWLYEEELLHSHIAHWSPDGERLAFLMINDSLVPTMVI PRFTGALY PKGKQY
PYPKAGQMNP TIKLYVVNLYGPTHTLELMPPDSFKSREYYITMVKWSNTKT VVRWLNRAQNI SILTVCE
TTTGACSKKYEMTSDTWLSQQNEEPVFSRDGSKFFMTVPVKQGGGGEFHFIAMFLIQSKSEQITVRHLTS
GNWEVIKILAYDETTQKIYFLSTESSRGRQLYSASTEGLLN RQCISCNFMKEQCTYFDASFSPMNQHFL
LFCGPRVPVSLHSTDNPAKYF ILESNSMLKEAILKKKIGKPEIKILHIDDYELPLQLSLPKDFMDRNQ
YALLLIMDEEPPGQLVTDKFHIDWDSVLIDMDNVIVARFDGRGSGFQGLKILQE IHRRLGSVEVKDQITA
VKFLLKLPYIDSKRLSIFGKGYGGYIASMILKSDEKLFKCGSVVAPITDLKLYASAFSERYLGMPSKEES
TYQAASV LHNHVLGKKEENILIIHG TADTKVHFQHS AELIKHLIKAGVNYTMQVYPDEGHNVSEKSKYHLY
STILKFFSDCLKKEEISVLPQPEEDE

TRTRPLEQKLI SEEDLAANDILDYKDDDDKV

Tag:	C-Myc/DDK
Purity:	> 80% as determined by SDS-PAGE and Coomassie blue staining
Concentration:	>0.05 µg/µL as determined by microplate BCA method
Labeling Method:	Labeled with [U- ¹³ C ₆ , ¹⁵ N ₄]-L-Arginine and [U- ¹³ C ₆ , ¹⁵ N ₂]-L-Lysine
Buffer:	25 mM Tris-HCl, 100 mM glycine, pH 7.3
Storage:	Store at -80°C. Avoid repeated freeze-thaw cycles.
Stability:	Stable for 3 months from receipt of products under proper storage and handling conditions.
RefSeq:	NP_065919



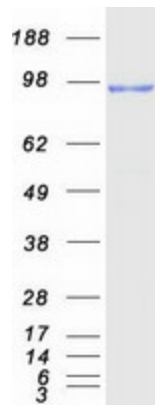
[View online »](#)

RefSeq Size:	5253
RefSeq ORF:	2388
Synonyms:	DPL2; DPPY; DPRP-3; DPRP3
Locus ID:	57628
UniProt ID:	Q8N608 , B2RCJ8
Cytogenetics:	2q14.1

Summary: This gene encodes a single-pass type II membrane protein that is a member of the S9B family in clan SC of the serine proteases. This protein has no detectable protease activity, most likely due to the absence of the conserved serine residue normally present in the catalytic domain of serine proteases. However, it does bind specific voltage-gated potassium channels and alters their expression and biophysical properties. Mutations in this gene have been associated with asthma. Alternate transcriptional splice variants, encoding different isoforms, have been characterized. [provided by RefSeq, Jul 2008]

Protein Families: Druggable Genome, Protease, Transmembrane

Product images:



Coomassie blue staining of purified DPP10 protein (Cat# [TP305435]). The protein was produced from HEK293T cells transfected with DPP10 cDNA clone (Cat# [RC205435]) using MegaTran 2.0 (Cat# [TT210002]).