

## Product datasheet for PH305429

### AGXT2L1 (ETNPPL) (NM\_031279) Human Mass Spec Standard

#### Product data:

Product Type:	Mass Spec Standards
Description:	AGXT2L1 MS Standard C13 and N15-labeled recombinant protein (NP_112569)
Species:	Human
Expression Host:	HEK293
Expression cDNA Clone or AA Sequence:	RC205429
Predicted MW:	55.7 kDa
Protein Sequence:	>RC205429 protein sequence Red=Cloning site Green=Tags(s)

MCELYSKRDTLGLRKKHIGPSCKVFFASDPIKIVRAQRQYMFDENGEQYLDICINNVAHVGHCHPGVVKAA  
LKQMELLNTNSRFLHDNIVEYAKRLSATLPEKLSVCYFTNSGSEANDLALRLARQFRGHQDVITLDHAYH  
GHLSSLIEISPYKFQKGDVKKEFVHVAPTPTYRGKYREDHADSASAYADEVKKIIEDAHNSGRKIAAF  
IAESMQSCGGQIIPPAGYFQKVAEYVHGAGGVFIADEVQVGFGRVGHKHFWSFQMYGEDFVPDIVTMGKPM  
GNGHVPVACVVTTKEIAEAFSSSGMEYFNTYGGNPVSCAVGLAVLDIIENEDLQGNARVGNLYL TELLKKQ  
KAKHTLIGDIRGIGLFIGIDLVDHLKRTPATAEAQHIIYKMKERVLLSADGPHRNVLLIKPPMCFTEE  
DAKFMVDQLDRILTVLEEAMGKTESVTSENTPCKTKMLKEAHIELLRDSTTDSKENPSRKRNGMCTDTH  
SLLSKRLKT

TRTRPLEQKLI SEEDLAANDILDYKDDDDKV

Tag:	C-Myc/DDK
Purity:	> 80% as determined by SDS-PAGE and Coomassie blue staining
Concentration:	>0.05 µg/µL as determined by microplate BCA method
Labeling Method:	Labeled with [U- <sup>13</sup> C <sub>6</sub> , <sup>15</sup> N <sub>4</sub> ]-L-Arginine and [U- <sup>13</sup> C <sub>6</sub> , <sup>15</sup> N <sub>2</sub> ]-L-Lysine
Buffer:	25 mM Tris-HCl, 100 mM glycine, pH 7.3
Storage:	Store at -80°C. Avoid repeated freeze-thaw cycles.
Stability:	Stable for 3 months from receipt of products under proper storage and handling conditions.
RefSeq:	<a href="#">NP_112569</a>
RefSeq Size:	2133
RefSeq ORF:	1497



[View online »](#)

Synonyms: AGXT2L1

Locus ID: 64850

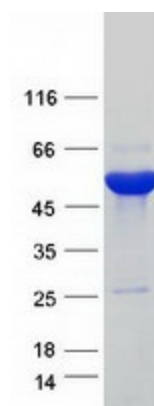
UniProt ID: [Q8TBG4](#)

Cytogenetics: 4q25

Summary: Catalyzes the pyridoxal-phosphate-dependent breakdown of phosphoethanolamine, converting it to ammonia, inorganic phosphate and acetaldehyde.[UniProtKB/Swiss-Prot Function]

Protein Families: Druggable Genome

### Product images:



Coomassie blue staining of purified ETNPPL protein (Cat# [TP305429]). The protein was produced from HEK293T cells transfected with ETNPPL cDNA clone (Cat# [RC205429]) using MegaTran 2.0 (Cat# [TT210002]).