

Product datasheet for PH305416

PDHA2 (NM_005390) Human Mass Spec Standard

Product data:

Product Type:	Mass Spec Standards
Description:	PDHA2 MS Standard C13 and N15-labeled recombinant protein (NP_005381)
Species:	Human
Expression Host:	HEK293
Expression cDNA Clone or AA Sequence:	RC205416
Predicted MW:	42.9 kDa
Protein Sequence:	>RC205416 protein sequence Red=Cloning site Green=Tags(s)

MLAAFISRVLRRVAQKSARRVLVASRNSNDATFEIKKCDLYLLEEGPPVTTVLTRA EGLKYRMMLTVR
RMELKADQLYKQKFIRGFCHLCDGQEACCVGLEAGINPSDHVITSYRAHGVICYTRGLSVRSILAELTGRR
GGCAKGGKGGSMHMYTKNFYGGNGIVGAQGPLGAGIALACKYKGNDEICLTLYGDGAANQQQIAEAFNMAA
LWKLPCVFIGENNLYGSGTSTERRAAASPDYYKRGNFIPGLKVDGMDVLCVREATKFAANYCRSGKGPILM
ELQTYRYHGHSMSPGVSYRTREEIQEVRSKRDP I I I L Q D R M V N S K L A T V E E L K E I G A E V R K E I D D A A Q F
ATTDPEPHLEELGHHIYSSDSSFEVRGANPWIKFKSVS

TRTRPLEQKLI SEEDLAANDILDYKDDDDKV

Tag:	C-Myc/DDK
Purity:	> 80% as determined by SDS-PAGE and Coomassie blue staining
Concentration:	>0.05 µg/µL as determined by microplate BCA method
Labeling Method:	Labeled with [U- ¹³ C ₆ , ¹⁵ N ₄]-L-Arginine and [U- ¹³ C ₆ , ¹⁵ N ₂]-L-Lysine
Buffer:	25 mM Tris-HCl, 100 mM glycine, pH 7.3
Storage:	Store at -80°C. Avoid repeated freeze-thaw cycles.
Stability:	Stable for 3 months from receipt of products under proper storage and handling conditions.
RefSeq:	<u>NP_005381</u>
RefSeq Size:	1387
RefSeq ORF:	1164
Synonyms:	PDHAL
Locus ID:	5161



[View online »](#)

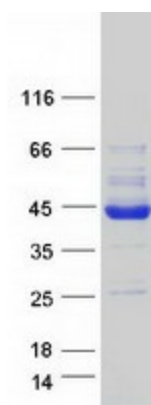
UniProt ID: [P29803](#)

Cytogenetics: 4q22.3

Summary: The pyruvate dehydrogenase complex catalyzes the overall conversion of pyruvate to acetyl-CoA and CO₂, and thereby links the glycolytic pathway to the tricarboxylic cycle.
[UniProtKB/Swiss-Prot Function]

Protein Pathways: Butanoate metabolism, Citrate cycle (TCA cycle), Glycolysis / Gluconeogenesis, Metabolic pathways, Pyruvate metabolism, Valine, leucine and isoleucine biosynthesis

Product images:



Coomassie blue staining of purified PDHA2 protein (Cat# [TP305416]). The protein was produced from HEK293T cells transfected with PDHA2 cDNA clone (Cat# [RC205416]) using MegaTran 2.0 (Cat# [TT210002]).