

Product datasheet for PH305410

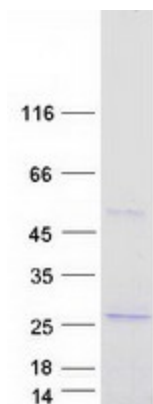
CAPSL (NM_001042625) Human Mass Spec Standard

Product data:

Product Type:	Mass Spec Standards
Description:	CAPSL MS Standard C13 and N15-labeled recombinant protein (NP_001036090)
Species:	Human
Expression Host:	HEK293
Expression cDNA Clone or AA Sequence:	RC205410
Predicted MW:	23.1 kDa
Protein Sequence:	>RC205410 protein sequence Red=Cloning site Green=Tags(s) MAIQAKKKLTTATNPIERLRLQCLARGSAGIKGLGRVFRIMDDNNRITLDFKEFMKGLNDYAVVMEKEEV EELFRFDKDGNGTIDFNEFLLTLRPPMSRARKEVIMQAFRKLDKTGDGVITIEDLREVNNAKHHPKYQN GEWSEEQVFRKFLDNFDSFYDKDGLVTPPEEFMNYAGVSASIDTDVYFIIMMRTAWKL TRTRPLEQKLISEEDLAANDILDYKDDDDKV
Tag:	C-Myc/DDK
Purity:	> 80% as determined by SDS-PAGE and Coomassie blue staining
Concentration:	>0.05 µg/µL as determined by microplate BCA method
Labeling Method:	Labeled with [U- ¹³ C ₆ , ¹⁵ N ₄]-L-Arginine and [U- ¹³ C ₆ , ¹⁵ N ₂]-L-Lysine
Buffer:	25 mM Tris-HCl, 100 mM glycine, pH 7.3
Storage:	Store at -80°C. Avoid repeated freeze-thaw cycles.
Stability:	Stable for 3 months from receipt of products under proper storage and handling conditions.
RefSeq:	NP_001036090
RefSeq Size:	987
RefSeq ORF:	594
Locus ID:	133690
UniProt ID:	Q8WWF8
Cytogenetics:	5p13.2



[View online »](#)

Product images:

Coomassie blue staining of purified CAPSL protein (Cat# [TP305410]). The protein was produced from HEK293T cells transfected with CAPSL cDNA clone (Cat# [RC205410]) using MegaTran 2.0 (Cat# [TT210002]).