

Product datasheet for PH305391

ADH1B (NM_000668) Human Mass Spec Standard

Product data:

Product Type:	Mass Spec Standards
Description:	ADH1B MS Standard C13 and N15-labeled recombinant protein (NP_000659)
Species:	Human
Expression Host:	HEK293
Expression cDNA Clone or AA Sequence:	RC205391
Predicted MW:	39.9 kDa
Protein Sequence:	>RC205391 protein sequence Red=Cloning site Green=Tags(s)

MSTAGKVIKCKAAVLWEVKKPFSIEDVEVAPPKAYEVRIKMOVAVGICRTDDHVVSGLVTPLPVILGHEA
AGIVESVGEVTTVKPGDKVIPLFTPQCCKRVCNPNESNYCLKNLGNPRGTLQDGTTRRFTCRGKPIHH
FLGTSTFSQYTVVDENAVAKIDAASPLEKVCLIGCGFSTGYGSVAVNVKVTGSTCAVFLGGVGLSAVM
GCKAAGAARIIVDINKDKFAKAKELGATECINPQDYKKPIQEVLEKEMTDGGVDFSEFEVIGRLDTMMASL
LCCHEACGTSVIVGVPPASQNLINPMLLLTGRTWKGAVYGGFKSKEGIPKLVADFMKKFSLDALITHV
LPFEKINEGFDLLHSGKSIRTVLTF

TRTRPLEQKLI SEEDLAANDILDYKDDDDKV

Tag:	C-Myc/DDK
Purity:	> 80% as determined by SDS-PAGE and Coomassie blue staining
Concentration:	>0.05 µg/µL as determined by microplate BCA method
Labeling Method:	Labeled with [U- ¹³ C ₆ , ¹⁵ N ₄]-L-Arginine and [U- ¹³ C ₆ , ¹⁵ N ₂]-L-Lysine
Buffer:	25 mM Tris-HCl, 100 mM glycine, pH 7.3
Storage:	Store at -80°C. Avoid repeated freeze-thaw cycles.
Stability:	Stable for 3 months from receipt of products under proper storage and handling conditions.
RefSeq:	<u>NP_000659</u>
RefSeq Size:	2707
RefSeq ORF:	1125
Synonyms:	ADH2; HEL-S-117
Locus ID:	125



[View online »](#)

UniProt ID: [P00325](#), [V9HW50](#)

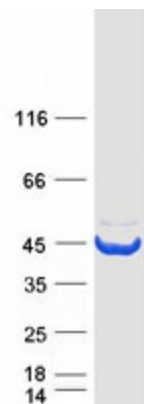
Cytogenetics: 4q23

Summary: The protein encoded by this gene is a member of the alcohol dehydrogenase family. Members of this enzyme family metabolize a wide variety of substrates, including ethanol, retinol, other aliphatic alcohols, hydroxysteroids, and lipid peroxidation products. This encoded protein, consisting of several homo- and heterodimers of alpha, beta, and gamma subunits, exhibits high activity for ethanol oxidation and plays a major role in ethanol catabolism. Three genes encoding alpha, beta and gamma subunits are tandemly organized in a genomic segment as a gene cluster. Two transcript variants encoding different isoforms have been found for this gene. [provided by RefSeq, Nov 2013]

Protein Families: Druggable Genome

Protein Pathways: Drug metabolism - cytochrome P450, Fatty acid metabolism, Glycolysis / Gluconeogenesis, Metabolic pathways, Metabolism of xenobiotics by cytochrome P450, Retinol metabolism, Tyrosine metabolism

Product images:



Coomassie blue staining of purified ADH1B protein (Cat# [TP305391]). The protein was produced from HEK293T cells transfected with ADH1B cDNA clone (Cat# [RC205391]) using MegaTran 2.0 (Cat# [TT210002]).