

## Product datasheet for PH305382

### Chromogranin C (SCG2) (NM\_003469) Human Mass Spec Standard

#### Product data:

Product Type:	Mass Spec Standards
Description:	SCG2 MS Standard C13 and N15-labeled recombinant protein (NP_003460)
Species:	Human
Expression Host:	HEK293
Expression cDNA Clone or AA Sequence:	RC205382
Predicted MW:	70.7 kDa
Protein Sequence:	>RC205382 protein sequence Red=Cloning site Green=Tags(s)

MAEAKTHWLGAALSLIPLIFLISGAEAASFQRNQLLQKEPDLRLLENVQKFPSPEMIRALEYIENLRQQA  
KEESSPDYNPYQGVSVPLQKQKENGDESHLPERDSLSEEDWMRIILEALRQAENEPQSAPKENKPYALNSE  
KNFPMDSDDYETQQWPERKCLKHMQFPPMYEENS RDNPFKRTNEIVEEQYTPQSLATLESVQELGKLTG  
PNNQKRERMDDEEKLYTDDDDIYKANNIAYEDVVGGEDWNPVEEKIESQTQEEVRDSKENIEKNEQIND  
EMKRSGQLGIQEEGLRKESKDQLSDDVSKVIAYLKRLVNAAGSGRLQNGQNGERATRLFEKPLDSQSIYQ  
LIEISRNLQIPPELIEMLKTGEKPNGSVEPERELDLPVLDLDDI SEADLDHPDLFQNRMLSKSGYPKTPG  
GAGTEALPDGLSVEDILNLLGMESAANQKTSYFPNPYQEKVLPRLPYGAGRSRSNQLPKAAWIPHVENR  
QMAYENLNDKQDELGEYLARMLVKYPEIINSNQVKRVPGQGSSEGLQEEEEQIEQAIKEHLNQGSSQETD  
KLAPVSKRFPVGPKNDDTPNRQYWDEDLLMKVLEYLNQEKAEKGREHIAKRAMENM

TRTRPLEQKLISEEDLAANDILDYKDDDDKV

Tag:	C-Myc/DDK
Purity:	> 80% as determined by SDS-PAGE and Coomassie blue staining
Concentration:	>0.05 µg/µL as determined by microplate BCA method
Labeling Method:	Labeled with [U- 13C6, 15N4]-L-Arginine and [U- 13C6, 15N2]-L-Lysine
Buffer:	25 mM Tris-HCl, 100 mM glycine, pH 7.3
Storage:	Store at -80°C. Avoid repeated freeze-thaw cycles.
Stability:	Stable for 3 months from receipt of products under proper storage and handling conditions.
RefSeq:	<a href="#">NP_003460</a>
RefSeq Size:	2586
RefSeq ORF:	1851



[View online »](#)

**Synonyms:** CHGC; EM66; SgII; SN

**Locus ID:** 7857

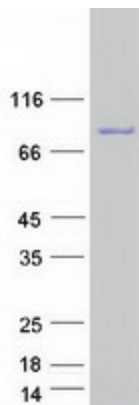
**UniProt ID:** [P13521](#)

**Cytogenetics:** 2q36.1

**Summary:** The protein encoded by this gene is a member of the chromogranin/secretogranin family of neuroendocrine secretory proteins. Studies in rodents suggest that the full-length protein, secretogranin II, is involved in the packaging or sorting of peptide hormones and neuropeptides into secretory vesicles. The full-length protein is cleaved to produce the active peptide secretoneurin, which exerts chemotaxic effects on specific cell types, and EM66, whose function is unknown. [provided by RefSeq, Jul 2008]

**Protein Families:** Secreted Protein, Transmembrane

### Product images:



Coomassie blue staining of purified SCG2 protein (Cat# [TP305382]). The protein was produced from HEK293T cells transfected with SCG2 cDNA clone (Cat# [RC205382]) using MegaTran 2.0 (Cat# [TT210002]).