

## Product datasheet for PH305371

### Neuronal membrane glycoprotein M6 a (GPM6A) (NM\_201591) Human Mass Spec Standard

#### Product data:

Product Type:	Mass Spec Standards
Description:	GPM6A MS Standard C13 and N15-labeled recombinant protein (NP_963885)
Species:	Human
Expression Host:	HEK293
Expression cDNA Clone or AA Sequence:	RC205371
Predicted MW:	31.2 kDa
Protein Sequence:	>RC205371 protein sequence Red=Cloning site Green=Tags(s)  MEENMEEGQTQKGCFECCIKCLGGIPYASLIATILLYAGVALFCGCGHEALSGTVNIIQTYFEMARTAGD TLDVFTMIDIFKYVIYGIAAFFVYGILLMVEGFFTTGAIKDLYGDFKITTGRCVSAWFIMLTYLFLMA WLGVTAFATSLPVYMYFNLWTICRNTTLVEGANLCLDLRQFGIVTIGEEKKICTVSENFLRMCESTELNMT FHLFIVALAGAGAAVIAMVHYLMVLSANWAYVKDACRMQKYEDIKSKEEQELHDIHSTRSKERLNAYT  TRTRPLEQKLI SEEDLAANDILDYKDDDDKV
Tag:	C-Myc/DDK
Purity:	> 80% as determined by SDS-PAGE and Coomassie blue staining
Concentration:	>0.05 µg/µL as determined by microplate BCA method
Labeling Method:	Labeled with [U- <sup>13</sup> C <sub>6</sub> , <sup>15</sup> N <sub>4</sub> ]-L-Arginine and [U- <sup>13</sup> C <sub>6</sub> , <sup>15</sup> N <sub>2</sub> ]-L-Lysine
Buffer:	25 mM Tris-HCl, 100 mM glycine, pH 7.3
Storage:	Store at -80°C. Avoid repeated freeze-thaw cycles.
Stability:	Stable for 3 months from receipt of products under proper storage and handling conditions.
RefSeq:	<a href="#">NP_963885</a>
RefSeq Size:	3697
RefSeq ORF:	834
Synonyms:	GPM6; M6A
Locus ID:	2823
UniProt ID:	<a href="#">P51674</a>



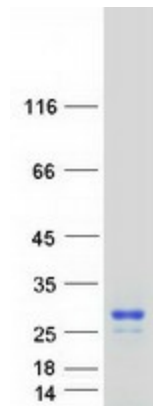
[View online »](#)

Cytogenetics: 4q34.2

**Summary:** Involved in neuronal differentiation, including differentiation and migration of neuronal stem cells. Plays a role in neuronal plasticity and is involved in neurite and filopodia outgrowth, filopodia motility and probably synapse formation. GPM6A-induced filopodia formation involves mitogen-activated protein kinase (MAPK) and Src signaling pathways. May be involved in neuronal NGF-dependent Ca(2+) influx. May be involved in regulation of endocytosis and intracellular trafficking of G-protein-coupled receptors (GPCRs); enhances internalization and recycling of mu-type opioid receptor.[UniProtKB/Swiss-Prot Function]

**Protein Families:** Transmembrane

### Product images:



Coomassie blue staining of purified GPM6A protein (Cat# [TP305371]). The protein was produced from HEK293T cells transfected with GPM6A cDNA clone (Cat# [RC205371]) using MegaTran 2.0 (Cat# [TT210002]).