

Product datasheet for PH305367

RIT2 (NM_002930) Human Mass Spec Standard

Product data:

Product Type:	Mass Spec Standards
Description:	RIT2 MS Standard C13 and N15-labeled recombinant protein (NP_002921)
Species:	Human
Expression Host:	HEK293
Expression cDNA Clone or AA Sequence:	RC205367
Predicted MW:	24.7 kDa
Protein Sequence:	>RC205367 protein sequence Red=Cloning site Green=Tags(s) MEVENEASCSPGSASGGSREYKVVMLGAGGVGKSAMTMQFISHQFPDYHDPTIEDAYKTQVRIDNEPAYL DILDTAGQAEFTAMREQYMRGGEGFIICYSVTDQRSFQEA AKFKELIFQVRHTYEIPLVLVGNKIDLEQF RQVSTEEGLSLAQEYNCGFFETS AALRFCIDDAFHGLVREIRKKESMPSLMEKCLKRKDCLWKKLKGSLK KKRENMT TRTRPLEQKLI SEEDLAANDILDYKDDDDKV
Tag:	C-Myc/DDK
Purity:	> 80% as determined by SDS-PAGE and Coomassie blue staining
Concentration:	>0.05 µg/µL as determined by microplate BCA method
Labeling Method:	Labeled with [U- ¹³ C ₆ , ¹⁵ N ₄]-L-Arginine and [U- ¹³ C ₆ , ¹⁵ N ₂]-L-Lysine
Buffer:	25 mM Tris-HCl, 100 mM glycine, pH 7.3
Storage:	Store at -80°C. Avoid repeated freeze-thaw cycles.
Stability:	Stable for 3 months from receipt of products under proper storage and handling conditions.
RefSeq:	NP_002921
RefSeq Size:	1102
RefSeq ORF:	651
Synonyms:	RIBA; RIN; ROC2
Locus ID:	6014
UniProt ID:	Q99578

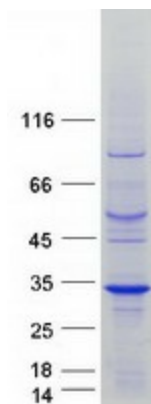


[View online »](#)

Cytogenetics: 18q12.3

Summary: RIN belongs to the RAS (HRAS; MIM 190020) superfamily of small GTPases (Shao et al., 1999 [PubMed 10545207]).[supplied by OMIM, Mar 2008]

Product images:



Coomassie blue staining of purified RIT2 protein (Cat# [TP305367]). The protein was produced from HEK293T cells transfected with RIT2 cDNA clone (Cat# [RC205367]) using MegaTran 2.0 (Cat# [TT210002]).