

Product datasheet for PH305359

YPEL1 (NM_013313) Human Mass Spec Standard

Product data:

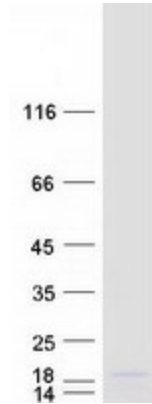
Product Type:	Mass Spec Standards
Description:	YPEL1 MS Standard C13 and N15-labeled recombinant protein (NP_037445)
Species:	Human
Expression Host:	HEK293
Expression cDNA Clone or AA Sequence:	RC205359
Predicted MW:	13.6 kDa
Protein Sequence:	>RC205359 protein sequence Red =Cloning site Green =Tags(s) MVKMTKSKTFQAYLPNCHRTYSCIHCRHLANHDELISKSFQGSQGRAYLFNSVNVVCGCPAEERVLLTG LHAVADIYCENCKTTLGWKYEHAFAESSQKYKEGKFIIELAHMIKDNGWE TRTRPLEQKLISEEDLAANDILDYKDDDDKV
Tag:	C-Myc/DDK
Purity:	> 80% as determined by SDS-PAGE and Coomassie blue staining
Concentration:	>0.05 µg/µL as determined by microplate BCA method
Labeling Method:	Labeled with [U- 13C6, 15N4]-L-Arginine and [U- 13C6, 15N2]-L-Lysine
Buffer:	25 mM Tris-HCl, 100 mM glycine, pH 7.3
Storage:	Store at -80°C. Avoid repeated freeze-thaw cycles.
Stability:	Stable for 3 months from receipt of products under proper storage and handling conditions.
RefSeq:	NP_037445
RefSeq Size:	4301
RefSeq ORF:	357
Synonyms:	FKSG3
Locus ID:	29799
UniProt ID:	O60688
Cytogenetics:	22q11.21-q11.22



[View online »](#)

Summary:

This gene is located in the region associated with DiGeorge syndrome on chromosome 22. The encoded protein localizes to the centrosome and nucleolus and may play a role in the regulation of cell division. [provided by RefSeq, Feb 2015]

Product images:

Coomassie blue staining of purified YPEL1 protein (Cat# [TP305359]). The protein was produced from HEK293T cells transfected with YPEL1 cDNA clone (Cat# [RC205359]) using MegaTran 2.0 (Cat# [TT210002]).