

Product datasheet for PH305347

KLHL2 (NM_007246) Human Mass Spec Standard

Product data:

Product Type:	Mass Spec Standards
Description:	KLHL2 MS Standard C13 and N15-labeled recombinant protein (NP_009177)
Species:	Human
Expression Host:	HEK293
Expression cDNA Clone or AA Sequence:	RC205347
Predicted MW:	66.1 kDa
Protein Sequence:	>RC205347 protein sequence Red=Cloning site Green=Tags(s)

METPPLPACTKQGHQKPLDSKDDNTEKHCPVTVNPWHMKKAFKVMNELRSQNLLCDVTIVAEDMEISAH
RVVLAACSPYFHAMFTGEMSESRAKRVRIKEVDGWTLRMLIDYVYTAIEIQVTEENVQVLLPAAGLLQLQD
YKKTCCFLESQHPVNCLGIRAFADMHACTDLLNKANTYAEQHFADVVLSEEFNLGIEQVCSLISSDK
LTISSEEVFEAVIAWVNHDKDVRQEFMARLMEHVRLPLLPREYLVQRVEEEALVKNSSACKDYLIEAMK
YHLLPTEQRILMKSVRTRLRTPMNLKLMVVVGGQAPKAIRSVCEYDFKEERWHQVAELPSRRCRAGMVE
MAGLVFAVGGFNGSLRVRTVDSYDPVKDQWTSVANMRDRRSTLGAAVLNGLLYAVGGFDGSLSSVEAY
NIKSNEWFHVAPMNTRRSSVGVGVVGGLLYAVGGYDVASRQCLSTVECYNATTNEWYIAEMSTRRSAG
VGVLNLLYAVGGHDGPLVRKSVEVYDPTTNAWRQVADMNMCRNAGVCAVNGLLYVVGDDGSCNLSV
EYYPNTDKWTVVSSCMSTGRSYAGVTVIDKRL

TRTRPLEQKLISEEDLAANDILDYKDDDDKV

Tag:	C-Myc/DDK
Purity:	> 80% as determined by SDS-PAGE and Coomassie blue staining
Concentration:	>0.05 µg/µL as determined by microplate BCA method
Labeling Method:	Labeled with [U- ¹³ C ₆ , ¹⁵ N ₄]-L-Arginine and [U- ¹³ C ₆ , ¹⁵ N ₂]-L-Lysine
Buffer:	25 mM Tris-HCl, 100 mM glycine, pH 7.3
Storage:	Store at -80°C. Avoid repeated freeze-thaw cycles.
Stability:	Stable for 3 months from receipt of products under proper storage and handling conditions.
RefSeq:	NP_009177
RefSeq Size:	3137
RefSeq ORF:	1779



[View online »](#)

Synonyms: ABP-KELCH; MAV; MAYVEN

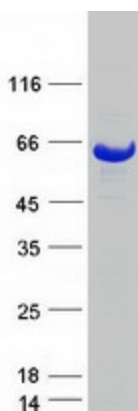
Locus ID: 11275

UniProt ID: [O95198](#)

Cytogenetics: 4q32.3

Summary: Component of a cullin-RING-based BCR (BTB-CUL3-RBX1) E3 ubiquitin-protein ligase complex that mediates the ubiquitination of target proteins, such as NPTXR, leading most often to their proteasomal degradation (By similarity). Responsible for degradative ubiquitination of the WNK kinases WNK1, WNK3 and WNK4. Plays a role in the reorganization of the actin cytoskeleton. Promotes growth of cell projections in oligodendrocyte precursors. [UniProtKB/Swiss-Prot Function]

Product images:



Coomassie blue staining of purified KLHL2 protein (Cat# [TP305347]). The protein was produced from HEK293T cells transfected with KLHL2 cDNA clone (Cat# [RC205347]) using MegaTran 2.0 (Cat# [TT210002]).