

Product datasheet for PH305338

MAGEB2 (NM_002364) Human Mass Spec Standard

Product data:

Product Type:	Mass Spec Standards
Description:	MAGEB2 MS Standard C13 and N15-labeled recombinant protein (NP_002355)
Species:	Human
Expression Host:	HEK293
Expression cDNA Clone or AA Sequence:	RC205338
Predicted MW:	35.3 kDa
Protein Sequence:	>RC205338 protein sequence Red=Cloning site Green=Tags(s)

MPRGQKSKLRAREKRRKARDETRGLNVPQVTEAEEEEAPCCSSSVSGGAASSSPAAGIPQKPQRAPTTAA
AAAAGVSSTKSKKGAKSHQGEKNASSSQASTSTKSPSEDPLTRKSGSLVQFLLYKYKIKKSVTKGEMLKI
VGKRFREHFPEILKKASEGLSVVFGLELNKVNPNNGHTYTFIDKVDLTDEESLLSSWDFPRRKLMLPLLV
IFLNGNSATEEEIWEFLNMLGVYDGEHVSFGEPWKLITKDLVQEKYLEYKQVPSDDPPRFQLWGPWAY
AETSKMKVLEFLAKVNGTTPCAFPTHYEEALKDEEKAGV

TRTRPLEQKLISEEDLAANDILDYKDDDDKV

Tag:	C-Myc/DDK
Purity:	> 80% as determined by SDS-PAGE and Coomassie blue staining
Concentration:	>0.05 µg/µL as determined by microplate BCA method
Labeling Method:	Labeled with [U- ¹³ C ₆ , ¹⁵ N ₄]-L-Arginine and [U- ¹³ C ₆ , ¹⁵ N ₂]-L-Lysine
Buffer:	25 mM Tris-HCl, 100 mM glycine, pH 7.3
Storage:	Store at -80°C. Avoid repeated freeze-thaw cycles.
Stability:	Stable for 3 months from receipt of products under proper storage and handling conditions.
RefSeq:	<u>NP_002355</u>
RefSeq Size:	1628
RefSeq ORF:	957
Synonyms:	CT3.2; DAM6; MAGE-XP-2
Locus ID:	4113



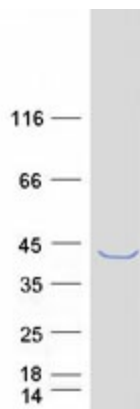
[View online »](#)

UniProt ID: [O15479](#), [Q53G50](#)

Cytogenetics: Xp21.2

Summary: This gene is a member of the MAGEB gene family. The members of this family have their entire coding sequences located in the last exon, and the encoded proteins show 50 to 68% sequence identity to each other. The promoters and first exons of the MAGEB genes show considerable variability, suggesting that the existence of this gene family enables the same function to be expressed under different transcriptional controls. This gene is localized in the DSS (dosage-sensitive sex reversal) critical region. It is expressed in testis and placenta, and in a significant fraction of tumors of various histological types. The MAGEB genes are clustered on chromosome Xp22-p21. [provided by RefSeq, Jul 2008]

Product images:



Coomassie blue staining of purified MAGEB2 protein (Cat# [TP305338]). The protein was produced from HEK293T cells transfected with MAGEB2 cDNA clone (Cat# [RC205338]) using MegaTran 2.0 (Cat# [TT210002]).