

Product datasheet for PH305335

Epac2 (RAPGEF4) (NM_007023) Human Mass Spec Standard

Product data:

Product Type:	Mass Spec Standards
Description:	RAPGEF4 MS Standard C13 and N15-labeled recombinant protein (NP_008954)
Species:	Human
Expression Host:	HEK293
Expression cDNA Clone or AA Sequence:	RC205335
Predicted MW:	115.5 kDa
Protein Sequence:	>RC205335 protein sequence Red=Cloning site Green=Tags(s)

MVAHAHSSSAEWIACLDKRPLERSSEVDIIFTRLKEVKAFEKFPNLLHQICLCGYENLEKGITL
FRQGDIGTNWYAVLAGSLDVKVSSETSSHQDAVTICTLGIGTAFGESILDNTPRHATIVTRESSELLRIEQ
KDFKALWEKYRQYAGLLAPPYGMETGSNNDRIIPDKENTPLIEPHVPLRPANTITKVPSEKILRAGKIL
RNAILSRAPHMIRDRKYHLKTYRQCCVGTSLVDWMMQQTCPVHSRTQAVGMWQVLLLEDGLNVHDQEHF
QDKYLFYRFLDDEHEDAPLPTREEKKECDEELQDTMLLLSQMGPDAHMRMILRKPPGQRTVDDLEIIEE
LLHIKALSHLSTTVKRELAGVLI FESHAKGGTVL FNQGEETSWYIILKGSVNVVIYGGKVVCTLHEGDD
FGKLALVNDAPRAASIVLREDNCHFLRVDKEDFNRIILRDVEANTVRLKEHDQDVLVLEKVPAGNRASNQG
NSQPQQKYTVMSGTPEKILEHFLLETIRLEATLNEATDVLNDFIMMHCVFMPNTQLCPALVAHYHAQPSQ
GTEQEKMDYALNNKRRVIRLVLQWAAMYGDLLQEDDVSMALFEFVYVSVSDDARMI AALKEQLPELEKIV
KQISEDAPKQKHKVLLQQFNTGDERAQRQP.IRGSDEVLFKYYCNDPTTYTIRVPVATSVKEVISA
DKLGSSEGLIIVKMSSGGEKVVLPNDVSVFMTLTINGRLFACPREQFDSLTPLPEQEGPTVGTVGFEL
MSSKDLAYQMTIYDWELFNCVHELELIYHTFGRHNFKKTANLDLFLRRFNEIQFVWVTEICLCSQLSKR
VQLLKKFIKIAAHCKEYKNLNSFFAIVMGLSNVAVSRLALTWEKLP SKFKK FYAEFESLMDPSRNHRAYR
LTVAKLEPPLIPFMPLLIKDMTF THEGNKTFIDNLVNF EKMRMIANTARTVRYRSQPFNPDAQAANKNH
QDVRSYVRQLNVIDNQRTL SQMSHRLPRRP

TRTRPLEQKLI SEEDLAANDILDYKDDDDKV

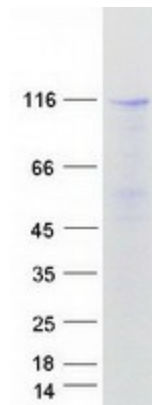
Tag:	C-Myc/DDK
Purity:	> 80% as determined by SDS-PAGE and Coomassie blue staining
Concentration:	>0.05 µg/µL as determined by microplate BCA method
Labeling Method:	Labeled with [U- ¹³ C ₆ , ¹⁵ N ₄]-L-Arginine and [U- ¹³ C ₆ , ¹⁵ N ₂]-L-Lysine
Buffer:	25 mM Tris-HCl, 100 mM glycine, pH 7.3
Storage:	Store at -80°C. Avoid repeated freeze-thaw cycles.



[View online »](#)

Stability:	Stable for 3 months from receipt of products under proper storage and handling conditions.
RefSeq:	NP_008954
RefSeq Size:	4361
RefSeq ORF:	3033
Synonyms:	CAMP-GEFII; CGEF2; EPAC; EPAC 2; EPAC2; Nbla00496
Locus ID:	11069
UniProt ID:	Q8WZA2
Cytogenetics:	2q31.1
Summary:	Guanine nucleotide exchange factor (GEF) for RAP1A, RAP1B and RAP2A small GTPases that is activated by binding cAMP. Seems not to activate RAB3A. Involved in cAMP-dependent, PKA-independent exocytosis through interaction with RIMS2 (By similarity).[UniProtKB/Swiss-Prot Function]
Protein Pathways:	Leukocyte transendothelial migration

Product images:



Coomassie blue staining of purified RAPGEF4 protein (Cat# [TP305335]). The protein was produced from HEK293T cells transfected with RAPGEF4 cDNA clone (Cat# [RC205335]) using MegaTran 2.0 (Cat# [TT210002]).