

Product datasheet for PH305311

TULP2 (NM_003323) Human Mass Spec Standard

Product data:

Product Type:	Mass Spec Standards
Description:	TULP2 MS Standard C13 and N15-labeled recombinant protein (NP_003314)
Species:	Human
Expression Host:	HEK293
Expression cDNA Clone or AA Sequence:	RC205311
Predicted MW:	58.7 kDa
Protein Sequence:	>RC205311 protein sequence Red=Cloning site Green=Tags(s)

MSQDNDTLMRDILGHELAAMRLQKLEQQRRLEFEKKQRQKRQELLMVQANPDASPWLWRSCLREERLLGDR
GLGNPFLRKKVSEAHLPSTGIHSLGTVSCGGDGRGERGLPTPRTEAVFRNLGLQSPFLSWLPDNSDAELE
EVSVENGSVSPPPFKQSPRIRRRGWQAHQRPGTRAEGESDSQDMGDAHKSPNMGPNPMDGDCVYENLAF
QKEEDLEKKREASESTGTNSSAAHNEELSKALKGEGGTDSDHMRHEASLAIRSPCPGLEEDMEAYVLRPA
LPGTMMQCYLTRDKHGVDKGLFPLYLYLETSDSLQRFLLAGRKRRTSKTNYLISLDPHTLSRDGDNFV
GKVRSNVSTKFTIFDNGVNPDRHLTRNTARIRQELGAVCYEPNVLYLGPLRKMVILPGTNSQNQRIN
VQPLNEQESLLSRYQRGDKQGLLLLHNKTPSWDKENGVYTLNFHGRVTRASVKNFQIVDPKHQEHVLVQF
GRVGPDTFTMDFCFPFSPQLQAFSICLSSFN

TRTRPLEQKLISEEDLAANDILDYKDDDDKV

Tag:	C-Myc/DDK
Purity:	> 80% as determined by SDS-PAGE and Coomassie blue staining
Concentration:	>0.05 µg/µL as determined by microplate BCA method
Labeling Method:	Labeled with [U- ¹³ C ₆ , ¹⁵ N ₄]-L-Arginine and [U- ¹³ C ₆ , ¹⁵ N ₂]-L-Lysine
Buffer:	25 mM Tris-HCl, 100 mM glycine, pH 7.3
Storage:	Store at -80°C. Avoid repeated freeze-thaw cycles.
Stability:	Stable for 3 months from receipt of products under proper storage and handling conditions.
RefSeq:	NP_003314
RefSeq Size:	1791
RefSeq ORF:	1560



[View online »](#)

Synonyms: CT65; TUBL2

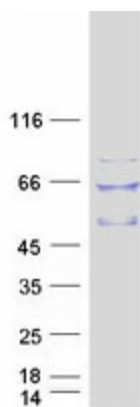
Locus ID: 7288

UniProt ID: [O00295](#)

Cytogenetics: 19q13.33

Summary: TULP2 is a member of a family of tubby-like genes (TULPs) that encode proteins of unknown function. Members of this family have been identified in plants, vertebrates, and invertebrates. The TULP proteins share a conserved C-terminal region of approximately 200 amino acid residues. [provided by RefSeq, Jul 2008]

Product images:



Coomassie blue staining of purified TULP2 protein (Cat# [TP305311]). The protein was produced from HEK293T cells transfected with TULP2 cDNA clone (Cat# [RC205311]) using MegaTran 2.0 (Cat# [TT210002]).