

Product datasheet for PH305300

EPS8 (NM_004447) Human Mass Spec Standard

Product data:

Product Type:	Mass Spec Standards
Description:	EPS8 MS Standard C13 and N15-labeled recombinant protein (NP_004438)
Species:	Human
Expression Host:	HEK293
Expression cDNA Clone or AA Sequence:	RC205300
Predicted MW:	91.9 kDa
Protein Sequence:	>RC205300 protein sequence Red=Cloning site Green=Tags(s)
	MNGHISNHPSSFGMYPQMGNGYGSPTFSQTDREHGSKTSAKALYEQRKNYARDSVSSVSDISQYRVEHL TTFVLDRKDAMITVDDGIRKLLKLLDAKGVWVTQDMILQVDDRAVSLIDLESKNELENFPLNTIQHCQAVM HSCSYDSVLALVCKEPTQNKPDHLFQCDEVKANLISEDIESAISDSKGGKQKRRPDALRMSNADPSIP PPPRAPAPAPPGTQTQVDVRSRVAAWSAWAADQGFQKPRQYHEQEETPEMMAARIDRDVQILNHILDDI EFFITKLQKAAEAFSELKRKKNKKGKRGPGEGVLTLRKAPPPDFLDCFQKFKHGFNLLAKLKSHIQ NPSAADLVHFLFTPLNMVVQATGGPELASSVLSPLLNKDTIDFLNYTVNGDERQLWMSLGGTWMKARAEW PKEQFIPPYVPRFRNGWEPPMLNFMGATMEQDLYQLAESVANVAEHQRKQEIKRLESTEHSVSEYHPADG YAFSSNIYTRGSHLDQGEAAVAFKPTSNRHIDRNYEPLKTPPKYAKSKYDFVARNNSVSVLKDDEILEI LDDRKQWVKVRNASGDSGFVPNNILDIVRPPESGLGRADPPYTHTIQKQRMEYGPRPADTPPAPSPPTP VPVPVPLPPSTPAPVPVSKVPANITRQNSSSSDSGGSIVRDSQRHKQLPVDRRKSQMEEVQDEL IHR LTI GRSAAQKKFHVPRQNVPVINITYDSTPEDVKTWLQSKGFNPVTVNSLGVLNGAQLFLSNKDELRTVCPEG ARVYSQITVQKAALEDSSGSSELQEIMRRRQEKISAAASDSGVSFDEGSSH
	TRTRPLEQKLISEEDLAANDILDYKDDDDKV
Tag:	C-Myc/DDK
Purity:	> 80% as determined by SDS-PAGE and Coomassie blue staining
Concentration:	>0.05 µg/µL as determined by microplate BCA method
Labeling Method:	Labeled with [U- ¹³ C ₆ , ¹⁵ N ₄]-L-Arginine and [U- ¹³ C ₆ , ¹⁵ N ₂]-L-Lysine
Buffer:	25 mM Tris-HCl, 100 mM glycine, pH 7.3
Storage:	Store at -80°C. Avoid repeated freeze-thaw cycles.
Stability:	Stable for 3 months from receipt of products under proper storage and handling conditions.
RefSeq:	NP_004438



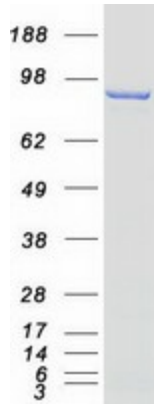
[View online »](#)

RefSeq Size:	4088
RefSeq ORF:	2466
Synonyms:	DFNB102
Locus ID:	2059
UniProt ID:	Q12929 , B4E3T6
Cytogenetics:	12p12.3

Summary: This gene encodes a member of the EPS8 family. This protein contains one PH domain and one SH3 domain. It functions as part of the EGFR pathway, though its exact role has not been determined. Highly similar proteins in other organisms are involved in the transduction of signals from Ras to Rac and growth factor-mediated actin remodeling. Alternate transcriptional splice variants of this gene have been observed but have not been thoroughly characterized. [provided by RefSeq, Jul 2008]

Protein Families: Druggable Genome

Product images:



Coomassie blue staining of purified EPS8 protein (Cat# [TP305300]). The protein was produced from HEK293T cells transfected with EPS8 cDNA clone (Cat# [RC205300]) using MegaTran 2.0 (Cat# [TT210002]).