

## Product datasheet for PH305289

### G protein alpha inhibitor 1 (GNAI1) (NM\_002069) Human Mass Spec Standard

#### Product data:

Product Type:	Mass Spec Standards
Description:	GNAI1 MS Standard C13 and N15-labeled recombinant protein (NP_002060)
Species:	Human
Expression Host:	HEK293
Expression cDNA Clone or AA Sequence:	RC205289
Predicted MW:	40.2 kDa
Protein Sequence:	>RC205289 representing NM_002069 Red=Cloning site Green=Tags(s)  MGCTLSAEDKAAVERSKMIDRNLRDGEKAAREVKLLLLGAGESGKSTIVKQMKIIEAGYSEEECKQYK AVVYSNTIQSIIAIIIRAMGRLKIDFGDSARADDARQLFVLGAAEEGFMTAELAGVIKRLWKDSGVQACF NRSREYQLNDSAAYYLNDLDRIAQPNYIPTQQDVLRTVKTGTGIVETHFTFKDLHFKMFDVGGQRSEK WIHCFEGVTAIIFCVALSDYDLVLAEDEEMNRMHESMKLFDSICNNKWFDTDSIILFLNKKDLFEEKIKK SPLTICYPEYAGSNTYEEAAAYIQCFEDLNKRKDTKEIYTHFTCATDTKNVQVFDAVTDVVIKNNLKD CGLF  TRTRPLEQKLISEEDLAANDILDYKDDDDKV
Tag:	C-Myc/DDK
Purity:	> 80% as determined by SDS-PAGE and Coomassie blue staining
Concentration:	>0.05 µg/µL as determined by microplate BCA method
Labeling Method:	Labeled with [U- <sup>13</sup> C <sub>6</sub> , <sup>15</sup> N <sub>4</sub> ]-L-Arginine and [U- <sup>13</sup> C <sub>6</sub> , <sup>15</sup> N <sub>2</sub> ]-L-Lysine
Buffer:	25 mM Tris-HCl, 100 mM glycine, pH 7.3
Storage:	Store at -80°C. Avoid repeated freeze-thaw cycles.
Stability:	Stable for 3 months from receipt of products under proper storage and handling conditions.
RefSeq:	<a href="#">NP_002060</a>
RefSeq Size:	3342
RefSeq ORF:	1062
Synonyms:	Gi
Locus ID:	2770



[View online »](#)

UniProt ID: [P63096](#)

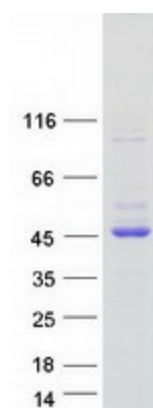
Cytogenetics: 7q21.11

**Summary:** Guanine nucleotide binding proteins are heterotrimeric signal-transducing molecules consisting of alpha, beta, and gamma subunits. The alpha subunit binds guanine nucleotide, can hydrolyze GTP, and can interact with other proteins. The protein encoded by this gene represents the alpha subunit of an inhibitory complex. The encoded protein is part of a complex that responds to beta-adrenergic signals by inhibiting adenylate cyclase. Two transcript variants encoding different isoforms have been found for this gene. [provided by RefSeq, Jan 2012]

**Protein Families:** Druggable Genome

**Protein Pathways:** Axon guidance, Chemokine signaling pathway, Gap junction, Leukocyte transendothelial migration, Long-term depression, Melanogenesis, Progesterone-mediated oocyte maturation, Tight junction

### Product images:



Coomassie blue staining of purified GNAI1 protein (Cat# [TP305289]). The protein was produced from HEK293T cells transfected with GNAI1 cDNA clone (Cat# [RC205289]) using MegaTran 2.0 (Cat# [TT210002]).