

Product datasheet for PH305286

GEM (NM_181702) Human Mass Spec Standard

Product data:

Product Type:	Mass Spec Standards
Description:	GEM MS Standard C13 and N15-labeled recombinant protein (NP_859053)
Species:	Human
Expression Host:	HEK293
Expression cDNA Clone or AA Sequence:	RC205286
Predicted MW:	33.9 kDa
Protein Sequence:	>RC205286 protein sequence Red =Cloning site Green =Tags(s) MTLNNVTMRQGTVGMQPQQQRWSIPADGRHLMVQKEPHQYSHRNRHSATPEDHCRRSWSSDSTDSVISSE SGNTYYRVVLIGEQQVGKSTLANIFAGVHDSMDSCEVLGEDTYERTLMVDGESATIILLDMWENKGENE WLHDHCMQVGDAYLIVYSITDRASFELRIQLRRARQTEDIPIILVGNKSDLVRCREVSVSEGRACA VVFDFCKFIETSAAVQHNVKELFEGIVRQVRLRRDSKEKNERRLAYQKRKESMPRKARRFWGKIVAKNKN MAFKLKSCHDLSVL TRTRPLEQKLISEEDLAANDILDYKDDDDKV
Tag:	C-Myc/DDK
Purity:	> 80% as determined by SDS-PAGE and Coomassie blue staining
Concentration:	>0.05 µg/µL as determined by microplate BCA method
Labeling Method:	Labeled with [U- ¹³ C ₆ , ¹⁵ N ₄]-L-Arginine and [U- ¹³ C ₆ , ¹⁵ N ₂]-L-Lysine
Buffer:	25 mM Tris-HCl, 100 mM glycine, pH 7.3
Storage:	Store at -80°C. Avoid repeated freeze-thaw cycles.
Stability:	Stable for 3 months from receipt of products under proper storage and handling conditions.
RefSeq:	NP_859053
RefSeq Size:	2080
RefSeq ORF:	888
Synonyms:	KIR
Locus ID:	2669



[View online »](#)

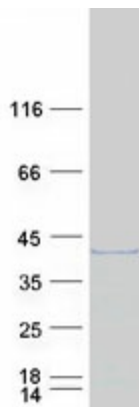
UniProt ID: [P55040](#), [A0A024R9F5](#)

Cytogenetics: 8q22.1

Summary: The protein encoded by this gene belongs to the RAD/GEM family of GTP-binding proteins. It is associated with the inner face of the plasma membrane and could play a role as a regulatory protein in receptor-mediated signal transduction. Alternative splicing occurs at this locus and two transcript variants encoding the same protein have been identified. [provided by RefSeq, Jul 2008]

Protein Families: Druggable Genome

Product images:



Coomassie blue staining of purified GEM protein (Cat# [TP305286]). The protein was produced from HEK293T cells transfected with GEM cDNA clone (Cat# [RC205286]) using MegaTran 2.0 (Cat# [TT210002]).