

## Product datasheet for PH305275

### SPAG6 (NM\_172242) Human Mass Spec Standard

#### Product data:

Product Type:	Mass Spec Standards
Description:	SPAG6 MS Standard C13 and N15-labeled recombinant protein (NP_758442)
Species:	Human
Expression Host:	HEK293
Expression cDNA Clone or AA Sequence:	RC205275
Predicted MW:	49.6 kDa
Protein Sequence:	>RC205275 protein sequence Red=Cloning site Green=Tags(s)

MSQRQVLQVFEQYQKARTQFVQMVAELATRPQNIETLQNAGVMSLLRTLLEDVVPTIQQIAALALGRLAN  
YNDDLAEAVVKCDILPQLVYSLAEQNRFYKAAAFVLRVKGKSPQLAQAIIVDCGALDTLVICLED FDPG  
VKEAAAWALRYIARHNAELSQAVVDAGAVPLLVLICIQEPEIALKGIAASALSDIVKHSPELAQT VVDAGA  
VAHLAQMILNPDAKLKHQILSALSQVSKHSVDLAEMVVEAEIFPVVL TCLKDKDEYVKKNA STLIREIAK  
HTPELSQLVYNAGGVAVIDCIGSCKGNTRLPGIMMLGYAAHSENLAMAVIISKGVPQLSVCLSEEPED  
HIKAAAALWALGQIGRHTPEHARAVAVTNTLPVLLSLYMSTESSEDLQVKS KKA IKNILQKCTYLPAL EPF  
LYDAPPNILKHVVGQFSKVLFPWIFRYTSAEGGQLSTT

TRTRPLEQKLISEEDLAANDILDYKDDDDKV

Tag:	C-Myc/DDK
Purity:	> 80% as determined by SDS-PAGE and Coomassie blue staining
Concentration:	>0.05 µg/µL as determined by microplate BCA method
Labeling Method:	Labeled with [U- <sup>13</sup> C <sub>6</sub> , <sup>15</sup> N <sub>4</sub> ]-L-Arginine and [U- <sup>13</sup> C <sub>6</sub> , <sup>15</sup> N <sub>2</sub> ]-L-Lysine
Buffer:	25 mM Tris-HCl, 100 mM glycine, pH 7.3
Storage:	Store at -80°C. Avoid repeated freeze-thaw cycles.
Stability:	Stable for 3 months from receipt of products under proper storage and handling conditions.
RefSeq:	<u>NP_758442</u>
RefSeq Size:	2488
RefSeq ORF:	1374
Synonyms:	CFAP194; CT141; FAP194; pf16; Repro-SA-1



[View online »](#)

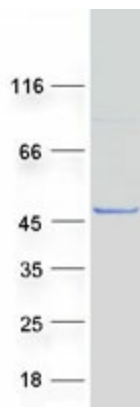
**Locus ID:** 9576

**UniProt ID:** [O75602](#)

**Cytogenetics:** 10p12.2

**Summary:** The correlation of anti-sperm antibodies with cases of unexplained infertility implicates a role for these antibodies in blocking fertilization. Improved diagnosis and treatment of immunologic infertility, as well as identification of proteins for targeted contraception, are dependent on the identification and characterization of relevant sperm antigens. The protein expressed by this gene is recognized by anti-sperm antibodies from an infertile man. This protein localizes to the tail of permeabilized human sperm and contains eight contiguous armadillo repeats, a motif known to mediate protein-protein interactions. Studies in mice suggest that this protein is involved in sperm flagellar motility and maintenance of the structural integrity of mature sperm. Several transcript variants encoding different isoforms have been found for this gene. [provided by RefSeq, Dec 2011]

### Product images:



Coomassie blue staining of purified SPAG6 protein (Cat# [TP305275]). The protein was produced from HEK293T cells transfected with SPAG6 cDNA clone (Cat# [RC205275]) using MegaTran 2.0 (Cat# [TT210002]).