

## Product datasheet for PH305274

### INSIG2 (NM\_016133) Human Mass Spec Standard

#### Product data:

Product Type:	Mass Spec Standards
Description:	INSIG2 MS Standard C13 and N15-labeled recombinant protein (NP_057217)
Species:	Human
Expression Host:	HEK293
Expression cDNA Clone or AA Sequence:	RC205274
Predicted MW:	24.8 kDa
Protein Sequence:	>RC205274 protein sequence Red=Cloning site Green=Tags(s)  MAEGETESPGPKKCGPYISSVTSQSVNLMIRGVVLFFIGVFLALVLNLLQIQRVNVLFPDVIASIFSSA WWVPPCCGTASAVIGLLYPCIDRHLGEPHKFKREWSSVMRCVAVFVGINHASAKVDFDNNIQLSLTLAAL SIGLWWTFFDRSRSGFGLGVGIAFLATVVTQLLVYNGVYQYTSPDFLYVRSWLPCIFFAGGITMGNIGRQL AMYECKVIAEKSHQE  TRTRPLEQKLISEEDLAANDILDYKDDDDKV
Tag:	C-Myc/DDK
Purity:	> 80% as determined by SDS-PAGE and Coomassie blue staining
Concentration:	>0.05 µg/µL as determined by microplate BCA method
Labeling Method:	Labeled with [U- <sup>13</sup> C <sub>6</sub> , <sup>15</sup> N <sub>4</sub> ]-L-Arginine and [U- <sup>13</sup> C <sub>6</sub> , <sup>15</sup> N <sub>2</sub> ]-L-Lysine
Buffer:	25 mM Tris-HCl, 100 mM glycine, pH 7.3
Storage:	Store at -80°C. Avoid repeated freeze-thaw cycles.
Stability:	Stable for 3 months from receipt of products under proper storage and handling conditions.
RefSeq:	<a href="#">NP_057217</a>
RefSeq Size:	2592
RefSeq ORF:	675
Synonyms:	INSIG-2
Locus ID:	51141
UniProt ID:	<a href="#">Q9Y5U4</a> , <a href="#">A0A024RAI2</a>



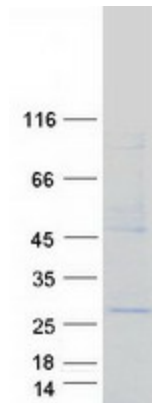
[View online »](#)

**Cytogenetics:** 2q14.1-q14.2

**Summary:** The protein encoded by this gene is highly similar to the protein product encoded by gene INSIG1. Both INSIG1 protein and this protein are endoplasmic reticulum proteins that block the processing of sterol regulatory element binding proteins (SREBPs) by binding to SREBP cleavage-activating protein (SCAP), and thus prevent SCAP from escorting SREBPs to the Golgi. [provided by RefSeq, Jul 2008]

**Protein Families:** Transmembrane

### Product images:



Coomassie blue staining of purified INSIG2 protein (Cat# [TP305274]). The protein was produced from HEK293T cells transfected with INSIG2 cDNA clone (Cat# [RC205274]) using MegaTran 2.0 (Cat# [TT210002]).