

Product datasheet for PH305270

SEC23 (SEC23A) (NM_006364) Human Mass Spec Standard

Product data:

Product Type:	Mass Spec Standards
Description:	SEC23A MS Standard C13 and N15-labeled recombinant protein (NP_006355)
Species:	Human
Expression Host:	HEK293
Expression cDNA Clone or AA Sequence:	RC205270
Predicted MW:	86.2 kDa
Protein Sequence:	>RC205270 protein sequence Red=Cloning site Green=Tags(s)

MTTYLEFIQQNEERDGVRFSWNVWPSSRLEATRMVVPVAALFTPLKERPDLPPIQYEPVLCSTRTTCAVL
NPLCQVDYRAKLWACNFCYQRNQFPSPSYAGISELNQPAELLQPQSSIEYVVLGRPQMPLIFLYVVDTCME
DEDLQALKESMQMSLSLLPPTALVGLITFGRMVQVHELGCESKSYVFRGTDLSAKQLQEMGLSKVP
VTQATRGPDVQPPPSNRFLQPVQKIDMNLTDLLGELQRDPWPVPQGRPLRSSGVALSIAVGLLECTFP
NTGARIMMFIGGPATQGGPMVVGDELKTPIRSWHDIDKDNKAVKKGTKHFEALANRAATTGHVIDIYAC
ALDQTGLLEMKCCPNLTGGYVMGDSFNTSLFKQTFQRVFTKDMHGQFKMGFGGTLEIKTSREIKISGAI
GPCVSLNSKGPCVSENEIGTGGTCQWKICGLSPTTTLAIYFEVNVQHNAPIPQGGRGAIQFVTQYQHSSG
QRRIRVTTIARNWADAQTQIQNIAASFDQEAAILMARLAIYRAETEEGPDVLRWLRQLIRLCQKFGFY
HKDDPSSFRFSETFSLYPQFMFHLRRSSFLQVFNNPDESSYYRHHFMRQDLTQSLIMIQPIMYAYSFSG
PPEPVLLDSSSILADRILLMDTFFQIL IYHGETIAQWRKSGYQDMPEYENFRHLLQAPVDDAQEILHSRF
PMPRYIDTEHGGSQARFLLSKVNPSQTHNNMYAWGQESGAPILTDDVSLQVFMHLKKLAVSSAA

TRTRPLEQKLISEEDLAANDILDYKDDDDKV

Tag:	C-Myc/DDK
Purity:	> 80% as determined by SDS-PAGE and Coomassie blue staining
Concentration:	>0.05 µg/µL as determined by microplate BCA method
Labeling Method:	Labeled with [U- ¹³ C ₆ , ¹⁵ N ₄]-L-Arginine and [U- ¹³ C ₆ , ¹⁵ N ₂]-L-Lysine
Buffer:	25 mM Tris-HCl, 100 mM glycine, pH 7.3
Storage:	Store at -80°C. Avoid repeated freeze-thaw cycles.
Stability:	Stable for 3 months from receipt of products under proper storage and handling conditions.
RefSeq:	NP_006355

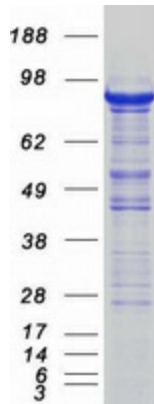


[View online »](#)

RefSeq Size:	3890
RefSeq ORF:	2295
Synonyms:	CLSD; hSec23A
Locus ID:	10484
UniProt ID:	Q15436
Cytogenetics:	14q21.1

Summary: The protein encoded by this gene is a member of the SEC23 subfamily of the SEC23/SEC24 family. It is part of a protein complex and found in the ribosome-free transitional face of the endoplasmic reticulum (ER) and associated vesicles. This protein has similarity to yeast Sec23p component of COPII. COPII is the coat protein complex responsible for vesicle budding from the ER. The encoded protein is suggested to play a role in the ER-Golgi protein trafficking. [provided by RefSeq, Jul 2008]

Product images:



Coomassie blue staining of purified SEC23A protein (Cat# [TP305270]). The protein was produced from HEK293T cells transfected with SEC23A cDNA clone (Cat# [RC205270]) using MegaTran 2.0 (Cat# [TT210002]).