

Product datasheet for PH305258

CRHBP (NM_001882) Human Mass Spec Standard

Product data:

Product Type:	Mass Spec Standards
Description:	CRHBP MS Standard C13 and N15-labeled recombinant protein (NP_001873)
Species:	Human
Expression Host:	HEK293
Expression cDNA Clone or AA Sequence:	RC205258
Predicted MW:	36 kDa
Protein Sequence:	>RC205258 representing NM_001882 Red=Cloning site Green=Tags(s) MSPNFKLQCHFILIFLTLALRGESRYLELREAADYDPFLLFSANLKRELAGEQPYRRALRCLDMLSLQGQF TFTADRPQLHCAAFFISEPEEFITIHVDQVSIDCQGGDFLKVFDGWILKGEKFPSSQDHPLPSAERYIDF CESGLSRRSIRSSQNVAMIFFRVHEPGNGFTLTIKTDPNLFPCNVISQTPNGKFTLVVPHQHRNCSFSII YPVVIKISDLTLGHVNLQLKKSSAGCEGIGDFVELLGGTGLDPSKMTPLADLCYPFHGPAQMKVGCNDT VVRMVSSGKHVNRVTFEYRQLEPYELENPNGNSIGEFCLSGL TRTRPLEQKLI SEEDLAANDILDYKDDDDKV
Tag:	C-Myc/DDK
Purity:	> 80% as determined by SDS-PAGE and Coomassie blue staining
Concentration:	>0.05 µg/µL as determined by microplate BCA method
Labeling Method:	Labeled with [U- ¹³ C ₆ , ¹⁵ N ₄]-L-Arginine and [U- ¹³ C ₆ , ¹⁵ N ₂]-L-Lysine
Buffer:	25 mM Tris-HCl, 100 mM glycine, pH 7.3
Storage:	Store at -80°C. Avoid repeated freeze-thaw cycles.
Stability:	Stable for 3 months from receipt of products under proper storage and handling conditions.
RefSeq:	<u>NP_001873</u>
RefSeq Size:	1854
RefSeq ORF:	966
Synonyms:	CRF-BP; CRFBP
Locus ID:	1393



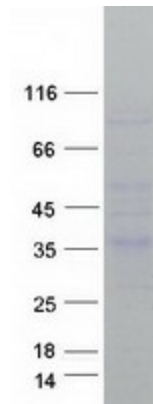
[View online »](#)

UniProt ID: [P24387](#)

Cytogenetics: 5q13.3

Summary: Corticotropin-releasing hormone is a potent stimulator of synthesis and secretion of preopiomelanocortin-derived peptides. Although CRH concentrations in the human peripheral circulation are normally low, they increase throughout pregnancy and fall rapidly after parturition. Maternal plasma CRH probably originates from the placenta. Human plasma contains a CRH-binding protein which inactivates CRH and which may prevent inappropriate pituitary-adrenal stimulation in pregnancy. [provided by RefSeq, Jul 2008]

Product images:



Coomassie blue staining of purified CRHBP protein (Cat# [TP305258]). The protein was produced from HEK293T cells transfected with CRHBP cDNA clone (Cat# [RC205258]) using MegaTran 2.0 (Cat# [TT210002]).