

Product datasheet for PH305232

ENOX1 (NM_017993) Human Mass Spec Standard

Product data:

Product Type:	Mass Spec Standards
Description:	ENOX1 MS Standard C13 and N15-labeled recombinant protein (NP_060463)
Species:	Human
Expression Host:	HEK293
Expression cDNA Clone or AA Sequence:	RC205232
Predicted MW:	73.3 kDa
Protein Sequence:	>RC205232 protein sequence Red =Cloning site Green =Tags(s)

MVDAGGVENITQLPQELPQMAAADGLGSAIDTTQLNMSVTDPTAWATAMNLMGVPVGLPGQQLVSD
 SICVPGFDP SLNMMTGITPINPMIPGLGLVPPPPTEVAVVKEIIHCKSCTLFQNPPLPPSTRERPPG
 CKTVFVGGLPENATEEIIQEVEQC GDITAIRKSKNFCHIRFAEEFMVDKAIYLSGYRMRLGSSTDKKD
 SGRLHVDFAQARDDFYEWCKQMRAREERHRRKLEEDRLRPPSPPAIMHYSEHEAALLAEKLDKSKFS
 EAITVLLSWIERGEVNRRSANQFYSMVQSANSVHRRLMNEKATHEQEMEEAKENFKNALTGILTQFEQIV
 AVFNASTRQKAWDHF SKAQKRNIDIWRKHSEELRNAQSEQLMGIRREEEMEMSDDENCDSP TKMRVDES
 ALAAQAYALKEENDSLRWQLDAYRNEVELLKQEKEQLFRTEENLTKDQQLQFLQQT MQGMQQQLLT IQEE
 LNNKKSELEQAKEEQSHTQALLKVLQEQLKGTKELVETNGHSHEDSNEINVL TVALVNQDRENNIEKRSQ
 GLKSEKEALLIGIISTFLHVHPFGANIEYLWSYMQQLDSKISANEIEMLLMRLPRMFKQEF TGVGATLEK
 RWKLCAFEGIKTT

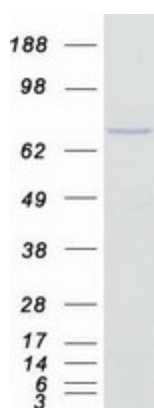
TRTRPLEQKLISEEDLAANDILDYKDDDDKV

Tag:	C-Myc/DDK
Purity:	> 80% as determined by SDS-PAGE and Coomassie blue staining
Concentration:	>0.05 µg/µL as determined by microplate BCA method
Labeling Method:	Labeled with [U- ¹³ C ₆ , ¹⁵ N ₄]-L-Arginine and [U- ¹³ C ₆ , ¹⁵ N ₂]-L-Lysine
Buffer:	25 mM Tris-HCl, 100 mM glycine, pH 7.3
Storage:	Store at -80°C. Avoid repeated freeze-thaw cycles.
Stability:	Stable for 3 months from receipt of products under proper storage and handling conditions.
RefSeq:	NP_060463
RefSeq Size:	3047


[View online »](#)

RefSeq ORF:	1929
Synonyms:	bA64J21.1; cCNOX; CNOX; PIG38
Locus ID:	55068
UniProt ID:	<u>Q8TC92, A0A024RDT8</u>
Cytogenetics:	13q14.11
Summary:	The protein encoded by this gene is involved in plasma membrane electron transport pathways. The encoded protein has both a hydroquinone (NADH) oxidase activity and a protein disulfide-thiol interchange activity. The two activities cycle with a periodicity of 24 minutes, with one activity being at its peak when the other is at its lowest. [provided by RefSeq, Dec 2016]

Product images:



Coomassie blue staining of purified Enox1 protein (Cat# [TP305232]). The protein was produced from HEK293T cells transfected with Enox1 cDNA clone (Cat# [RC205232]) using MegaTran 2.0 (Cat# [TT210002]).