

Product datasheet for PH305228

KLHL11 (NM_018143) Human Mass Spec Standard

Product data:

Product Type:	Mass Spec Standards
Description:	KLHL11 MS Standard C13 and N15-labeled recombinant protein (NP_060613)
Species:	Human
Expression Host:	HEK293
Expression cDNA Clone or AA Sequence:	RC205228
Predicted MW:	80.1 kDa
Protein Sequence:	>RC205228 protein sequence Red=Cloning site Green=Tags(s)

MAAAVAAAAAAAAAASLQVLEMESMETAAAGSAGLAAEVRGSGTVDFGPGPGISAMEASGGDPGPEAED
FECSSHCSEL SWRQNEQRRQGLFCDITLCFAGGAGREFRAHRVLAATAEYFTPLL SGQFSESRSRGRVEM
RKWSSEPGPEPDTVEAVIEYMYTGRIRVSTGVSHEVLELADRFL LIRLKEFCGEFLKKKLHLSNCVAIHS
LAHMYTLSQLAKAADMIRRNFKVVIQDEEFYTLPFHL IRDWLSDLEITVDSEEVLFETVLKWWQRNAEE
RERYFEELFKLLRLSQMKPTYL TRHVKPERL VANNEVCVKLVADAVERHALRAENIQSGTCQHPTSHVSL
LPRYGQNMVIMVIGGVSEGGDYLSECVGYFVDEDRWVNLPHIHNHLDGHAVAVTESYVVYAGSMEPGFA
KTVERYNPNLNTWEHVCSLMTRKHSFGLTEVKGKLYSIGGHGNFSPGFKDVTVYNPELDKWHNLESAPKI
LRDVKALAIEDRFVYIAARTPVDRDTEGLKAVITCYDTETRQWQDVESLPLIDNYCFFQMSVVNSNFYQ
TASCCPKSYCLENEEA VRKIASQVSDEILES LPPEVLSIEGAAICYKDDVFIIGWKNSSDDIDKQYRKE
AYRYCAERKRWMLLPMPQPRCRATACHVRIPYRYLHGTQRYPMQNLMWQKDRIRQMQE IHRHALNMRR
VPSSQIEC

TRTRPLEQKLISEEDLAANDILDYKDDDDKV

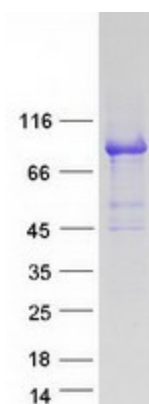
Tag:	C-Myc/DDK
Purity:	> 80% as determined by SDS-PAGE and Coomassie blue staining
Concentration:	>0.05 µg/µL as determined by microplate BCA method
Labeling Method:	Labeled with [U- 13C6, 15N4]-L-Arginine and [U- 13C6, 15N2]-L-Lysine
Buffer:	25 mM Tris-HCl, 100 mM glycine, pH 7.3
Storage:	Store at -80°C. Avoid repeated freeze-thaw cycles.
Stability:	Stable for 3 months from receipt of products under proper storage and handling conditions.
RefSeq:	NP_060613



[View online »](#)

RefSeq Size:	2326
RefSeq ORF:	2124
Locus ID:	55175
UniProt ID:	Q9NVR0 , A0A024R1T8
Cytogenetics:	17q21.2
Summary:	Component of a cullin-RING-based BCR (BTB-CUL3-RBX1) E3 ubiquitin-protein ligase complex that mediates the ubiquitination of target proteins, leading most often to their proteasomal degradation.[UniProtKB/Swiss-Prot Function]
Protein Families:	Secreted Protein

Product images:



Coomassie blue staining of purified KLHL11 protein (Cat# [TP305228]). The protein was produced from HEK293T cells transfected with KLHL11 cDNA clone (Cat# [RC205228]) using MegaTran 2.0 (Cat# [TT210002]).