

Product datasheet for PH305227

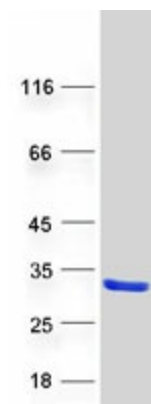
LRRC20 (NM_207119) Human Mass Spec Standard

Product data:

Product Type:	Mass Spec Standards
Description:	LRRC20 MS Standard C13 and N15-labeled recombinant protein (NP_997002)
Species:	Human
Expression Host:	HEK293
Expression cDNA Clone or AA Sequence:	RC205227
Predicted MW:	20.5 kDa
Protein Sequence:	>RC205227 protein sequence Red=Cloning site Green=Tags(s) MLKKMGEAVARVARKVNETVESGSDTLDLAECKLVSFPIGIYKVLARNVSGQIHLITLANNELKSLTSKFM TTFSQLRELHLEGNFLHRLPSEVSALQHLKAIDL SRNQFQDFPEQLTALPALETINLEENEIVDVPVEKL AAMPALRSINLRFNPLNAEVRVIAPPLIKFDMLMSPEGARAPLP TRTRPLEQKLISEEDLAANDILDYKDDDDKV
Tag:	C-Myc/DDK
Purity:	> 80% as determined by SDS-PAGE and Coomassie blue staining
Concentration:	>0.05 µg/µL as determined by microplate BCA method
Labeling Method:	Labeled with [U- 13C6, 15N4]-L-Arginine and [U- 13C6, 15N2]-L-Lysine
Buffer:	25 mM Tris-HCl, 100 mM glycine, pH 7.3
Storage:	Store at -80°C. Avoid repeated freeze-thaw cycles.
Stability:	Stable for 3 months from receipt of products under proper storage and handling conditions.
RefSeq:	<u>NP_997002</u>
RefSeq Size:	3428
RefSeq ORF:	552
Locus ID:	55222
UniProt ID:	<u>Q8TCA0, A0A024QZM2</u>
Cytogenetics:	10q22.1



[View online »](#)

Product images:

Coomassie blue staining of purified LRRC20 protein (Cat# [TP305227]). The protein was produced from HEK293T cells transfected with LRRC20 cDNA clone (Cat# [RC205227]) using MegaTran 2.0 (Cat# [TT210002]).