

Product datasheet for PH305218

TKTL1 (NM_012253) Human Mass Spec Standard

Product data:

Product Type:	Mass Spec Standards
Description:	TKTL1 MS Standard C13 and N15-labeled recombinant protein (NP_036385)
Species:	Human
Expression Host:	HEK293
Expression cDNA Clone or AA Sequence:	RC205218
Predicted MW:	65.4 kDa
Protein Sequence:	>RC205218 protein sequence Red=Cloning site Green=Tags(s)

MADAEARAEFPPEEARPDRGTLQVFQDMASRLRIHSIRATCSTSSGHPTSCSSSSEIMSVLFFYIMRYKQS
DPENPDNDRFVLAKRLSFVDVATGWLQGLGVACGMAYTGKYFDRASYRVFCLMSDGESEGSVWEAMAF
ASYSLDNLVATFDVNRLGHSGALPAEHCINIYQRRCEAFGWNTYVVDGRDVEALCQVFWQASQVKHKPT
AVVAKTFKGRGTPSIEDAESWHAKPMPRERADAIKLIQSQIQTSRNLDQPPIEDSPEVNITDVRMTSP
PDYRVGDKIATRKACGLALAKLGYANNRVVLDGDTRYSTFSEIFNKEYPERFIECFMAEQNMVSVALGC
ASRGRTIAFASTFAAFLTRAFDHIRIGGLAESNINIIGSHCGVSVGDDGASQMALEDIAMFRTIPKCTIF
YPTDAVSTEHAVALAANAKGMCFIRTRPETMVIYTPQERFEIGQAKVLRHCVSDKVTVIGAGITVYEAL
AAADELSKQDIFIRVIDLFTIKPLDVATIVSSAKATEGRIITVEDHYPQGGIGEAVCAAVSMDPDIQVHS
LAVSGVPQSGKSEELDMYGISARHIIIVAVKCMLLN

TRTRPLEQKLISEEDLAANDILDYKDDDDKV

Tag:	C-Myc/DDK
Purity:	> 80% as determined by SDS-PAGE and Coomassie blue staining
Concentration:	>0.05 µg/µL as determined by microplate BCA method
Labeling Method:	Labeled with [U- ¹³ C ₆ , ¹⁵ N ₄]-L-Arginine and [U- ¹³ C ₆ , ¹⁵ N ₂]-L-Lysine
Buffer:	25 mM Tris-HCl, 100 mM glycine, pH 7.3
Storage:	Store at -80°C. Avoid repeated freeze-thaw cycles.
Stability:	Stable for 3 months from receipt of products under proper storage and handling conditions.
RefSeq:	NP_036385
RefSeq Size:	2652
RefSeq ORF:	1788



[View online >](#)

Synonyms: TKR; TKT2

Locus ID: 8277

UniProt ID: [P51854](#), [Q5TYJ8](#)

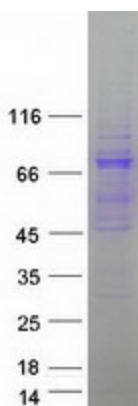
Cytogenetics: Xq28

Summary: The protein encoded by this gene is a transketolase that acts as a homodimer and catalyzes the conversion of sedoheptulose 7-phosphate and D-glyceraldehyde 3-phosphate to D-ribose 5-phosphate and D-xylulose 5-phosphate. This reaction links the pentose phosphate pathway with the glycolytic pathway. Variations in this gene may be the cause of Wernicke-Korsakoff syndrome. Three transcript variants encoding different isoforms have been found for this gene. [provided by RefSeq, Mar 2011]

Protein Families: Druggable Genome

Protein Pathways: Metabolic pathways, Pentose phosphate pathway

Product images:



Coomassie blue staining of purified TKTL1 protein (Cat# [TP305218]). The protein was produced from HEK293T cells transfected with TKTL1 cDNA clone (Cat# [RC205218]) using MegaTran 2.0 (Cat# [TT210002]).