

Product datasheet for PH305217

KIAA1434 (GPCPD1) (NM_019593) Human Mass Spec Standard

Product data:

Product Type:	Mass Spec Standards
Description:	GPCPD1 MS Standard C13 and N15-labeled recombinant protein (NP_062539)
Species:	Human
Expression Host:	HEK293
Expression cDNA Clone or AA Sequence:	RC205217
Predicted MW:	76 kDa
Protein Sequence:	>RC205217 protein sequence Red=Cloning site Green=Tags(s)

MTPSQVAFEIRGTLTPGEVFAICGSCDALGNWNPQNAVALLPENDTGESMLWKATIVLSRGVSVQYRYFK
GYFLEPKTIGGPCQVIVHKWETHLQPRISITPLESEIIDDGQFGIHNGVETLDSGWLTCQTEIRLRHYS
EKPPVSIKTKLKKSRFRVKTLEGLEEDDDRVSPVTLHKMSNSLEISLISDNEFKCRHSQPECGYGLQ
PDRWTEYSIQTMEDNLELIFDFFEDLSEHVQGDALPGHVGTACLLSSTIAESGKSAGILTLPIMSRN
SRKTIGKVRVDYIIKPLPGYSCDMKSSFSKYWKPRIPLDVGHRGAGNSTTTAQLAKVQENTIASLRNAA
SHGAAFVEFDVHLSKDFVPVYHDLTCCLTMKKKFDADPVELFEIPVKELTFDQLQLLKLTHVTALKSKD
RKESVVQEENSFSENQPFPSLKMVLESLEPEDVGFNIEIKWICQQRDGMWDGNLSTYFDMNLFDIILKTV
LENSGKRRIVFSSFDADICTMVRQKQNKYPILFLTQGKSEIYPELMDLRSRTTPIAMSFQFENLLGINV
HTEDLLRNPSYIQEAKAKGLVIFCWGDDTNDPENRRKLELGVNGLIYDRIYDWMPEQPNIQVEQLERL
KQELPELKSCLCPTVSRFVPSLCEGSDIHVDANGIDNVENA

TRTRPLEQKLISEEDLAANDILDYKDDDDKV

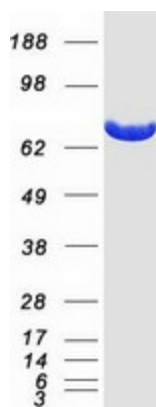
Tag:	C-Myc/DDK
Purity:	> 80% as determined by SDS-PAGE and Coomassie blue staining
Concentration:	>0.05 µg/µL as determined by microplate BCA method
Labeling Method:	Labeled with [U- 13C6, 15N4]-L-Arginine and [U- 13C6, 15N2]-L-Lysine
Buffer:	25 mM Tris-HCl, 100 mM glycine, pH 7.3
Storage:	Store at -80°C. Avoid repeated freeze-thaw cycles.
Stability:	Stable for 3 months from receipt of products under proper storage and handling conditions.
RefSeq:	NP_062539
RefSeq Size:	5478



[View online »](#)

RefSeq ORF:	2016
Synonyms:	EDI3; GDE5; GDPD6; PREI4
Locus ID:	56261
UniProt ID:	Q9NPB8
Cytogenetics:	20p12.3
Summary:	May be involved in the negative regulation of skeletal muscle differentiation, independently of its glycerophosphocholine phosphodiesterase activity.[UniProtKB/Swiss-Prot Function]

Product images:



Coomassie blue staining of purified GPCPD1 protein (Cat# [TP305217]). The protein was produced from HEK293T cells transfected with GPCPD1 cDNA clone (Cat# [RC205217]) using MegaTran 2.0 (Cat# [TT210002]).