

Product datasheet for PH305216

HLA-G (HLA-G) (NM_002127) Human Mass Spec Standard

Product data:

Product Type:	Mass Spec Standards
Description:	HLA MS Standard C13 and N15-labeled recombinant protein (NP_002118)
Species:	Human
Expression Host:	HEK293
Expression cDNA Clone or AA Sequence:	RC205216
Predicted MW:	38.3 kDa
Protein Sequence:	>RC205216 protein sequence Red=Cloning site Green=Tags(s)
	MVVMAPRTLFLLLSGALTLTETWAGSHSMRYFSAAVSRPSRGEPRFIAMGYVDDTQFVRFSDSACPRME PRAPWVEREGPEYWEEETRNKHAHAQTDRMNLQTLRGYYNQSEASSHTLQWMIGCDLGS DGRLLRGYEQY AYDGKDYALNEDLRSWTAADTAAQISKRKCEAANVAEQRRAYLEGTCVEWLHRYLENGKEMLQRADPPK THVTHHPVFDYEATLRCWALGFYPAEIIITWQRDGEDQTQDVELVETKPA GDGTFQKWA AVVPSGEEQR YTCHVQHEGLPEPLMRWKQSSLP T I P I M G I V A G L V V L A A V V T G A A V A A V L W R K K S S D
	TRTRPLEQKLI SEEDLAANDILDYKDDDDKV
Tag:	C-Myc/DDK
Purity:	> 80% as determined by SDS-PAGE and Coomassie blue staining
Concentration:	>0.05 µg/µL as determined by microplate BCA method
Labeling Method:	Labeled with [U- ¹³ C ₆ , ¹⁵ N ₄]-L-Arginine and [U- ¹³ C ₆ , ¹⁵ N ₂]-L-Lysine
Buffer:	25 mM Tris-HCl, 100 mM glycine, pH 7.3
Storage:	Store at -80°C. Avoid repeated freeze-thaw cycles.
Stability:	Stable for 3 months from receipt of products under proper storage and handling conditions.
RefSeq:	<u>NP_002118</u>
RefSeq Size:	1578
RefSeq ORF:	1014
Synonyms:	MHC-G
Locus ID:	3135



[View online »](#)

UniProt ID: [P17693](#), [Q6DU14](#)

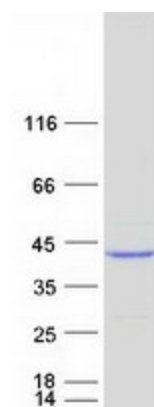
Cytogenetics: 6p22.1

Summary: HLA-G belongs to the HLA class I heavy chain paralogues. This class I molecule is a heterodimer consisting of a heavy chain and a light chain (beta-2 microglobulin). The heavy chain is anchored in the membrane. HLA-G is expressed on fetal derived placental cells. The heavy chain is approximately 45 kDa and its gene contains 8 exons. Exon one encodes the leader peptide, exons 2 and 3 encode the alpha1 and alpha2 domain, which both bind the peptide, exon 4 encodes the alpha3 domain, exon 5 encodes the transmembrane region, and exon 6 encodes the cytoplasmic tail. [provided by RefSeq, Jul 2008]

Protein Families: Transmembrane

Protein Pathways: Allograft rejection, Antigen processing and presentation, Autoimmune thyroid disease, Cell adhesion molecules (CAMs), Endocytosis, Graft-versus-host disease, Natural killer cell mediated cytotoxicity, Type I diabetes mellitus, Viral myocarditis

Product images:



Coomassie blue staining of purified HLA-G protein (Cat# [TP305216]). The protein was produced from HEK293T cells transfected with HLA-G cDNA clone (Cat# [RC205216]) using MegaTran 2.0 (Cat# [TT210002]).