

Product datasheet for PH305213

Monocarboxylic acid transporter 1 (SLC16A1) (NM_003051) Human Mass Spec Standard

Product data:

Product Type:	Mass Spec Standards
Description:	SLC16A1 MS Standard C13 and N15-labeled recombinant protein (NP_003042)
Species:	Human
Expression Host:	HEK293
Expression cDNA Clone or AA Sequence:	RC205213
Predicted MW:	53.9 kDa
Protein Sequence:	>RC205213 protein sequence Red=Cloning site Green=Tags(s)

MPPAVGGPVGYPDGGGWAVVIGAFISIGFSYAFPKSITVFFKEIEGIFHATTSEVSWISSIMLAVMY
GGGPISSILVNKYGSRIVMIVGGCLSGCGLIAASFNTVQQLYVCIGVIGGLGLAFNLPALTMIGKYFY
KRRPLANGLAMAGSPVFLCTLAPLNQVFFGIFGWRGSFLILGLLLLNCCVAGALMRPIGPKPTKAGKDKS
KASLEKAGKSGVKKDLHDANTDLIGRHPKQEKRSVFQTIHQFLDLTLFTHRGFLLYLSGNVIMFFGLFAP
LVFLSSYGKSQHYSSKSAFLLSILAFVDMVARPSMGLVANTKPIRPRIQYFFAASVVANGVCHMLAPLS
TTYVGFVYAGFFGFAGWLVSSVLFETLMDLVGPQRFSSAVGLVTIVECCPVLLGPPLLGRNDMYGDYK
YTYWACGVVLIISGIYLFIMGINYRLLAKEQKANEQKESKEEETSIDVAGKPNEVTKAAESPDQKDTD
GGPKEEESPV

TRTRPLEQKLISEEDLAANDILDYKDDDDKV

Tag:	C-Myc/DDK
Purity:	> 80% as determined by SDS-PAGE and Coomassie blue staining
Concentration:	>0.05 µg/µL as determined by microplate BCA method
Labeling Method:	Labeled with [U- ¹³ C ₆ , ¹⁵ N ₄]-L-Arginine and [U- ¹³ C ₆ , ¹⁵ N ₂]-L-Lysine
Buffer:	25 mM Tris-HCl, 100 mM glycine, pH 7.3
Storage:	Store at -80°C. Avoid repeated freeze-thaw cycles.
Stability:	Stable for 3 months from receipt of products under proper storage and handling conditions.
RefSeq:	<u>NP_003042</u>
RefSeq Size:	3927
RefSeq ORF:	1500



[View online »](#)

Synonyms: HHF7; MCT; MCT1; MCT1D

Locus ID: 6566

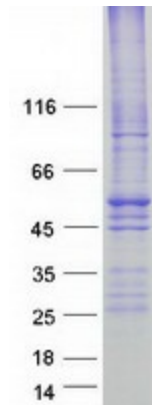
UniProt ID: [P53985](#), [A0A024R0H1](#)

Cytogenetics: 1p13.2

Summary: The protein encoded by this gene is a proton-linked monocarboxylate transporter that catalyzes the movement of many monocarboxylates, such as lactate and pyruvate, across the plasma membrane. Mutations in this gene are associated with erythrocyte lactate transporter defect. Alternatively spliced transcript variants have been found for this gene.[provided by RefSeq, Oct 2009]

Protein Families: Transmembrane

Product images:



Coomassie blue staining of purified SLC16A1 protein (Cat# [TP305213]). The protein was produced from HEK293T cells transfected with SLC16A1 cDNA clone (Cat# [RC205213]) using MegaTran 2.0 (Cat# [TT210002]).