

## Product datasheet for PH305190

### LIM domain only 3 (LMO3) (NM\_018640) Human Mass Spec Standard

#### Product data:

Product Type:	Mass Spec Standards
Description:	LMO3 MS Standard C13 and N15-labeled recombinant protein (NP_061110)
Species:	Human
Expression Host:	HEK293
Expression cDNA Clone or AA Sequence:	RC205190
Predicted MW:	16.6 kDa
Protein Sequence:	>RC205190 protein sequence Red=Cloning site Green=Tags(s)  MLSVQPDTPKPGCAGCNRKIKDRYLLKALDKYWHEDCLKCACDCRLGEVGSTLYTKANLILCRRDYRLR FGVTGNCAACSKLIPAFEMVMRAKDNVYHLDCFACQLCNQRFVGDKFFLKNMILCQTDYEEGLMKEGY APQVR  TRTRPLEQKLI SEEDLAANDILDYKDDDDKV
Tag:	C-Myc/DDK
Purity:	> 80% as determined by SDS-PAGE and Coomassie blue staining
Concentration:	>0.05 µg/µL as determined by microplate BCA method
Labeling Method:	Labeled with [U- <sup>13</sup> C <sub>6</sub> , <sup>15</sup> N <sub>4</sub> ]-L-Arginine and [U- <sup>13</sup> C <sub>6</sub> , <sup>15</sup> N <sub>2</sub> ]-L-Lysine
Buffer:	25 mM Tris-HCl, 100 mM glycine, pH 7.3
Storage:	Store at -80°C. Avoid repeated freeze-thaw cycles.
Stability:	Stable for 3 months from receipt of products under proper storage and handling conditions.
RefSeq:	<a href="#">NP_061110</a>
RefSeq Size:	3850
RefSeq ORF:	435
Synonyms:	RBTN3; RBTN2; Rhom-3; RHOM3
Locus ID:	55885
UniProt ID:	<a href="#">Q8TAP4</a> , <a href="#">A0A024RAT1</a>



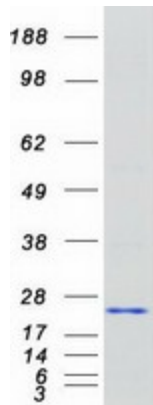
[View online »](#)

**Cytogenetics:** 12p12.3

**Summary:** The protein encoded by this gene belongs to the rhombotin family of cysteine-rich LIM domain oncogenes. This gene is predominantly expressed in the brain. Related family members, LMO1 and LMO2 on chromosome 11, have been reported to be involved in chromosomal translocations in T-cell leukemia. Many alternatively spliced transcript variants have been found for this gene. [provided by RefSeq, Aug 2011]

**Protein Families:** Transcription Factors

**Product images:**



Coomassie blue staining of purified LMO3 protein (Cat# [TP305190]). The protein was produced from HEK293T cells transfected with LMO3 cDNA clone (Cat# [RC205190]) using MegaTran 2.0 (Cat# [TT210002]).