

## Product datasheet for PH305181

### GPR85 (NM\_018970) Human Mass Spec Standard

#### Product data:

Product Type:	Mass Spec Standards
Description:	GPR85 MS Standard C13 and N15-labeled recombinant protein (NP_061843)
Species:	Human
Expression Host:	HEK293
Expression cDNA Clone or AA Sequence:	RC205181
Predicted MW:	42 kDa
Protein Sequence:	>RC205181 protein sequence <span style="color: red;">Red</span> =Cloning site <span style="color: green;">Green</span> =Tags(s)

MANYSHADNIIQLSPLTAFLLKLTSLGFIIGVSVGNLLISILLVKDKTLHRAPYYFLDLCCSDILRS  
 AICFPFVFNKSTWYGTLTCKVIAFLGVLSCFHTAFMLFCISVTRYLAIAHHRFYTKRLTFWTCLA  
 VICMVWTLVAMAFPPVLDVGTYSFIREEDQCAFQHRFRANDSLGFMLLLALILLATQLVYLKLIFFVH  
 DRRKMKPVQFVAASQNWTFHGPAGSGQAAANWLAGFGRGPTPTLLGIRQNANTTGRRLLVLDEFKME  
 KRISRMFYIMTFLFLTLWGPYLVACYWRVFARGPVVPGGFLTAAVWMSFAQAGINPFVCFISNRELRRCF  
 STTLLYCRKSRLPREPYCVI

TRTRPLEQKLISEEDLAANDILDYKDDDDKV

Tag:	C-Myc/DDK
Purity:	> 80% as determined by SDS-PAGE and Coomassie blue staining
Concentration:	>0.05 µg/µL as determined by microplate BCA method
Labeling Method:	Labeled with [U- <sup>13</sup> C <sub>6</sub> , <sup>15</sup> N <sub>4</sub> ]-L-Arginine and [U- <sup>13</sup> C <sub>6</sub> , <sup>15</sup> N <sub>2</sub> ]-L-Lysine
Buffer:	25 mM Tris-HCl, 100 mM glycine, pH 7.3
Storage:	Store at -80°C. Avoid repeated freeze-thaw cycles.
Stability:	Stable for 3 months from receipt of products under proper storage and handling conditions.
RefSeq:	<u><a href="#">NP_061843</a></u>
RefSeq Size:	4948
RefSeq ORF:	1110
Synonyms:	SREB; SREB2
Locus ID:	54329


[View online »](#)

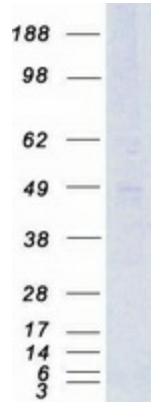
**UniProt ID:** P60893, A4D0T8, Q8NEN2

**Cytogenetics:** 7q31.1

**Summary:** Members of the G protein-coupled receptor (GPCR) family, such as GPR85, have a similar structure characterized by 7 transmembrane domains. Activation of GPCRs by extracellular stimuli, such as neurotransmitters, hormones, or light, induces an intracellular signaling cascade mediated by heterotrimeric GTP-binding proteins, or G proteins (Matsumoto et al., 2000 [PubMed 10833454]).[supplied by OMIM, Aug 2008]

**Protein Families:** Druggable Genome, GPCR, Transmembrane

## Product images:



Coomassie blue staining of purified GPR85 protein (Cat# [TP305181]). The protein was produced from HEK293T cells transfected with GPR85 cDNA clone (Cat# [RC205181]) using MegaTran 2.0 (Cat# [TT210002]).