

## Product datasheet for PH305146

### Somatostatin Receptor 2 (SSTR2) (NM\_001050) Human Mass Spec Standard

#### Product data:

Product Type:	Mass Spec Standards
Description:	SSTR2 MS Standard C13 and N15-labeled recombinant protein (NP_001041)
Species:	Human
Expression Host:	HEK293
Expression cDNA Clone or AA Sequence:	RC205146
Predicted MW:	41.3 kDa
Protein Sequence:	>RC205146 protein sequence Red=Cloning site Green=Tags(s)
	MDMADEPLNGSHTWLSIPFDLNGSVVSTNTSNQTEPYDYLTSSNAVLTFTIYFVVCIIGLCGNTLVIYVILR YAKMKTITNIYILNLAIADFLMLGLPFLAMQVALVHWPFGKAICRVVMTVDGINQFTSIFCLTVMSIDR YLAVVHPIKSAKWRPRTAKMITMAVWGVSLLVILPIMIYAGLRSNQWGRSSCTINWPGESGAWYTGFI YTFILGFLVPLTIIICLCYLFIIKVKSSGIRVGSKRKKSEKKVTRMVSIVVAVFIFCWLPFYIFNVSSV SMAISPTPALKGMFDFVVVLTYSANSCANPILYAFLSDNFKKSFNVLCLVKVSGTDDGERSDSKQDKSRL NETTETQRTLLNGDLQTSI
	TRTRPLEQKLISEEDLAANDILDYKDDDDKV
Tag:	C-Myc/DDK
Purity:	> 80% as determined by SDS-PAGE and Coomassie blue staining
Concentration:	>0.05 µg/µL as determined by microplate BCA method
Labeling Method:	Labeled with [U- <sup>13</sup> C <sub>6</sub> , <sup>15</sup> N <sub>4</sub> ]-L-Arginine and [U- <sup>13</sup> C <sub>6</sub> , <sup>15</sup> N <sub>2</sub> ]-L-Lysine
Buffer:	25 mM Tris-HCl, 100 mM glycine, pH 7.3
Storage:	Store at -80°C. Avoid repeated freeze-thaw cycles.
Stability:	Stable for 3 months from receipt of products under proper storage and handling conditions.
RefSeq:	<a href="#">NP_001041</a>
RefSeq Size:	2996
RefSeq ORF:	1107
Locus ID:	6752
UniProt ID:	<a href="#">P30874</a>



[View online »](#)

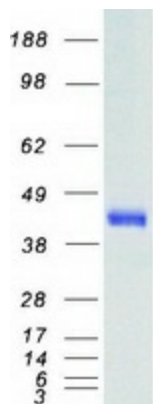
**Cytogenetics:** 17q25.1

**Summary:** Somatostatin acts at many sites to inhibit the release of many hormones and other secretory proteins. The biologic effects of somatostatin are probably mediated by a family of G protein-coupled receptors that are expressed in a tissue-specific manner. SSTR2 is a member of the superfamily of receptors having seven transmembrane segments and is expressed in highest levels in cerebrum and kidney. [provided by RefSeq, Jul 2008]

**Protein Families:** Druggable Genome, GPCR, Transmembrane

**Protein Pathways:** Neuroactive ligand-receptor interaction

### Product images:



Coomassie blue staining of purified SSTR2 protein (Cat# [TP305146]). The protein was produced from HEK293T cells transfected with SSTR2 cDNA clone (Cat# [RC205146]) using MegaTran 2.0 (Cat# [TT210002]).