

Product datasheet for PH305137

ERLIN1 (NM_006459) Human Mass Spec Standard

Product data:

Product Type:	Mass Spec Standards
Description:	ERLIN1 MS Standard C13 and N15-labeled recombinant protein (NP_006450)
Species:	Human
Expression Host:	HEK293
Expression cDNA Clone or AA Sequence:	RC205137
Predicted MW:	38.9 kDa
Protein Sequence:	>RC205137 protein sequence Red=Cloning site Green=Tags(s) MTQARVLVAAVVGLVAVLLYASIHKIEEGHLAVYYRGGALLTSPSGPGYHIMLPFITFRSVQTTLQTDE YKNVPCGTSGGVMIIYIDRIEVVNLAPYAVFDIVRNYTADYDKTLIFNKIHHELNQFCSAHTLQEVYIEL FDQIDENLKQALQKDLNMAPGLTIQAVRVTKPKIPEAIRRFELMEAEKTKLLIAAQKQKVVEKEAETE RKKAVIEAEKIAQVAKIRFQQKVMKEKETEKRISIEIDAFLAREKAKADAEEYAAHKYATSNKHKLTPY LELKKYQAIASNSKIYFGSNIPNMFVDSSEKALKYSDIRTGRESSLPSKEALEPSGENVIQNKESTG TRTRPLEQKLISEEDLAANDILDYKDDDDKV
Tag:	C-Myc/DDK
Purity:	> 80% as determined by SDS-PAGE and Coomassie blue staining
Concentration:	>0.05 µg/µL as determined by microplate BCA method
Labeling Method:	Labeled with [U- ¹³ C ₆ , ¹⁵ N ₄]-L-Arginine and [U- ¹³ C ₆ , ¹⁵ N ₂]-L-Lysine
Buffer:	25 mM Tris-HCl, 100 mM glycine, pH 7.3
Storage:	Store at -80°C. Avoid repeated freeze-thaw cycles.
Stability:	Stable for 3 months from receipt of products under proper storage and handling conditions.
RefSeq:	NP_006450
RefSeq Size:	3450
RefSeq ORF:	1038
Synonyms:	C10orf69; Erlin-1; KE04; KEO4; SPFH1; SPG62
Locus ID:	10613



[View online »](#)

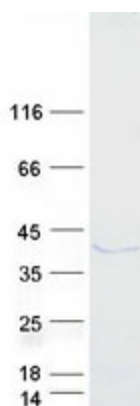
UniProt ID: [O75477](#)

Cytogenetics: 10q24.31

Summary: The protein encoded by this gene is part of a protein complex that mediates degradation of inositol 1,4,5-trisphosphate receptors in the endoplasmic reticulum. The encoded protein also binds cholesterol and regulates the SREBP signaling pathway, which promotes cellular cholesterol homeostasis. Defects in this gene have been associated with spastic paraplegia 62. [provided by RefSeq, Dec 2016]

Protein Families: Transmembrane

Product images:



Coomassie blue staining of purified ERLIN1 protein (Cat# [TP305137]). The protein was produced from HEK293T cells transfected with ERLIN1 cDNA clone (Cat# [RC205137]) using MegaTran 2.0 (Cat# [TT210002]).