

## Product datasheet for PH305121

### SOX8 (NM\_014587) Human Mass Spec Standard

#### Product data:

Product Type:	Mass Spec Standards
Description:	SOX8 MS Standard C13 and N15-labeled recombinant protein (NP_055402)
Species:	Human
Expression Host:	HEK293
Expression cDNA Clone or AA Sequence:	RC205121
Predicted MW:	47.3 kDa
Protein Sequence:	>RC205121 protein sequence Red=Cloning site Green=Tags(s)

MLDMSEARSQPPCSPSGTASSMSHVEDSDSDAPPSPAGSEGLGRAGVAVGGARGDPAEAADERFPACIRD  
AVSQVLKGYDWSLVPMPVRGGGGALKAKPHVKRPMNAFMVWAQAARRKLADQYPHLHNAELSKTLGKLW  
RLLSESEKRPFVEEAERLRVQHKKDHPDYKYQPRRRKSAKAGHSDSDSGAELGPHPGGGAYYKAEAGLGD  
GHHHGDHTGQTHGPPTPTTPKTELQQAGAKPELKLEGRRPVDSGRQNIIDFSNVDISELSSEVMGTMDAF  
DVHEFDQYLPLGGPAPPEPGQAYGGAYFHAGASPVWAHKAPSASASPTETGPPRPHIKTEQPSPGHYGD  
QPRGSPDYGSCSGQSSATPAAPAGPFAGSQGDYGDQLQASSYYGAYPGYAPGLYQYPCFHSRRPYASPLL  
NGLALPPAHSPTSHWDQPVYTTLTRP

TRTRPLEQKLISEEDLAANDILDYKDDDDKV

Tag:	C-Myc/DDK
Purity:	> 80% as determined by SDS-PAGE and Coomassie blue staining
Concentration:	>0.05 µg/µL as determined by microplate BCA method
Labeling Method:	Labeled with [U- <sup>13</sup> C <sub>6</sub> , <sup>15</sup> N <sub>4</sub> ]-L-Arginine and [U- <sup>13</sup> C <sub>6</sub> , <sup>15</sup> N <sub>2</sub> ]-L-Lysine
Buffer:	25 mM Tris-HCl, 100 mM glycine, pH 7.3
Storage:	Store at -80°C. Avoid repeated freeze-thaw cycles.
Stability:	Stable for 3 months from receipt of products under proper storage and handling conditions.
RefSeq:	<u><a href="#">NP_055402</a></u>
RefSeq Size:	3049
RefSeq ORF:	1338
Locus ID:	30812



[View online »](#)

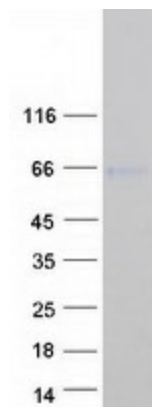
UniProt ID: [P57073](#)

Cytogenetics: 16p13.3

**Summary:** This gene encodes a member of the SOX (SRY-related HMG-box) family of transcription factors involved in the regulation of embryonic development and in the determination of the cell fate. The encoded protein may act as a transcriptional activator after forming a protein complex with other proteins. This protein may be involved in brain development and function. Haploinsufficiency for this protein may contribute to the cognitive disability found in an alpha-thalassemia-related syndrome (ART-16). This protein is also highly expressed in the majority of human hepatocellular carcinomas and promotes cellular proliferation and enhanced tumor growth. [provided by RefSeq, Jul 2017]

**Protein Families:** Transcription Factors

### Product images:



Coomassie blue staining of purified SOX8 protein (Cat# [TP305121]). The protein was produced from HEK293T cells transfected with SOX8 cDNA clone (Cat# [RC205121]) using MegaTran 2.0 (Cat# [TT210002]).