

Product datasheet for PH305118

Osteopontin (SPP1) (NM_000582) Human Mass Spec Standard

Product data:

| | |
|---------------------------------------|---|
| Product Type: | Mass Spec Standards |
| Description: | SPP1 MS Standard C13 and N15-labeled recombinant protein (NP_000573) |
| Species: | Human |
| Expression Host: | HEK293 |
| Expression cDNA Clone or AA Sequence: | RC205118 |
| Predicted MW: | 33.8 kDa |
| Protein Sequence: | >RC205118 protein sequence Red=Cloning site Green=Tags(s) MRIAVICFLLGITCAIPVKQADSGSSEEKQLYNKYPDVATWLNPDPSQKQNL LAPQTLPSKSNESH MDDMDEDDDDHVDSQDSIDSNDSDVDVDDTDDSHQSDSHHSDESDELVTDFPTDLPATEVFTPVVPTVD TYDGRGDSVVYGLRSKSKKFRRPDIQYPDATDEDITSHMESEELNGAYKAIPVAQDLNAPSDWDSRGKDS YETSQLDDQSAETHSHKQSRLYKRKANDESNEHSDVIDSQELSKVSREFHSHEFHSHEDMLVDPKSKEE DKHLKFRISHELDSASSEVN TRTRPLEQKLI SEEDLAANDILDYKDDDDKV |
| Tag: | C-Myc/DDK |
| Purity: | > 80% as determined by SDS-PAGE and Coomassie blue staining |
| Concentration: | >0.05 µg/µL as determined by microplate BCA method |
| Labeling Method: | Labeled with [U- ¹³ C ₆ , ¹⁵ N ₄]-L-Arginine and [U- ¹³ C ₆ , ¹⁵ N ₂]-L-Lysine |
| Buffer: | 25 mM Tris-HCl, 100 mM glycine, pH 7.3 |
| Storage: | Store at -80°C. Avoid repeated freeze-thaw cycles. |
| Stability: | Stable for 3 months from receipt of products under proper storage and handling conditions. |
| RefSeq: | <u>NP_000573</u> |
| RefSeq Size: | 1616 |
| RefSeq ORF: | 900 |
| Synonyms: | BNSP; BSPI; ETA-1; OPN |
| Locus ID: | 6696 |



[View online »](#)

UniProt ID: [P10451](#), [A0A024RDE6](#)

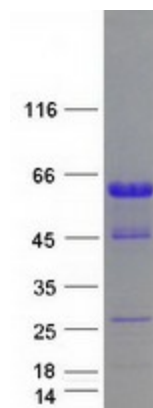
Cytogenetics: 4q22.1

Summary: The protein encoded by this gene is involved in the attachment of osteoclasts to the mineralized bone matrix. The encoded protein is secreted and binds hydroxyapatite with high affinity. The osteoclast vitronectin receptor is found in the cell membrane and may be involved in the binding to this protein. This protein is also a cytokine that upregulates expression of interferon-gamma and interleukin-12. Several transcript variants encoding different isoforms have been found for this gene. [provided by RefSeq, Oct 2011]

Protein Families: Druggable Genome, Secreted Protein

Protein Pathways: ECM-receptor interaction, Focal adhesion, Toll-like receptor signaling pathway

Product images:



Coomassie blue staining of purified SPP1 protein (Cat# [TP305118]). The protein was produced from HEK293T cells transfected with SPP1 cDNA clone (Cat# [RC205118]) using MegaTran 2.0 (Cat# [TT210002]).