

Product datasheet for PH305105

Cofilin 2 (CFL2) (NM_021914) Human Mass Spec Standard

Product data:

Product Type:	Mass Spec Standards
Description:	CFL2 MS Standard C13 and N15-labeled recombinant protein (NP_068733)
Species:	Human
Expression Host:	HEK293
Expression cDNA Clone or AA Sequence:	RC205105
Predicted MW:	18.7 kDa
Protein Sequence:	>RC205105 protein sequence Red=Cloning site Green=Tags(s) MASGVTVNDEVIKVFNDMKVRKSSTQEEIKKRKAVLFLCLSDDKRQIIVEEAKQILVGDIGDTPYTS FVKLLPLNDCRYALYDATYETKESKKEDLVFIFWAPESAPLKSMMIYASSKDAIKKFTGIKHEWQVNGL DDIKDRSTLGEKLGNNVVSLEGKPL TRTRPLEQKLISEEDLAANDILDYKDDDDKV
Tag:	C-Myc/DDK
Purity:	> 80% as determined by SDS-PAGE and Coomassie blue staining
Concentration:	>0.05 µg/µL as determined by microplate BCA method
Labeling Method:	Labeled with [U- ¹³ C ₆ , ¹⁵ N ₄]-L-Arginine and [U- ¹³ C ₆ , ¹⁵ N ₂]-L-Lysine
Buffer:	25 mM Tris-HCl, 100 mM glycine, pH 7.3
Storage:	Store at -80°C. Avoid repeated freeze-thaw cycles.
Stability:	Stable for 3 months from receipt of products under proper storage and handling conditions.
RefSeq:	NP_068733
RefSeq Size:	3125
RefSeq ORF:	498
Synonyms:	NEM7
Locus ID:	1073
UniProt ID:	Q9Y281 , Q549N0



[View online »](#)

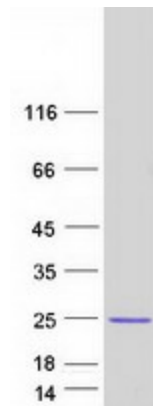
Cytogenetics: 14q13.1

Summary: This gene encodes an intracellular protein that is involved in the regulation of actin-filament dynamics. This protein is a major component of intranuclear and cytoplasmic actin rods. It can bind G- and F-actin in a 1:1 ratio of cofilin to actin, and it reversibly controls actin polymerization and depolymerization in a pH-dependent manner. Mutations in this gene cause nemaline myopathy type 7, a form of congenital myopathy. Alternative splicing results in multiple transcript variants. [provided by RefSeq, Jul 2009]

Protein Families: Druggable Genome

Protein Pathways: Axon guidance, Fc gamma R-mediated phagocytosis, Regulation of actin cytoskeleton

Product images:



Coomassie blue staining of purified CFL2 protein (Cat# [TP305105]). The protein was produced from HEK293T cells transfected with CFL2 cDNA clone (Cat# [RC205105]) using MegaTran 2.0 (Cat# [TT210002]).