

Product datasheet for PH305083

CHAC2 (NM_001008708) Human Mass Spec Standard

Product data:

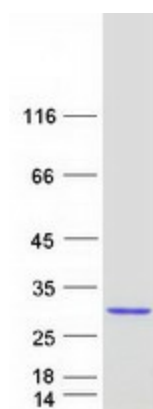
Product Type:	Mass Spec Standards
Description:	CHAC2 MS Standard C13 and N15-labeled recombinant protein (NP_001008708)
Species:	Human
Expression Host:	HEK293
Expression cDNA Clone or AA Sequence:	RC205083
Predicted MW:	20.9 kDa
Protein Sequence:	>RC205083 protein sequence Red=Cloning site Green=Tags(s) MWVFGYGSLLWKVDFPYQDKLVGYITNYSRRFWQGSTDHRGVPKPGRRVTLVEDPAGCVWGVAYRLPVG KEEEVKAYLDFREKGGYRTTTFYFYPKDPPTKPFVLLYIGTCNDPDYLGPALEDIAEQIFNAAGPSGR NTEYLFELANSIRNLVPPEEADEHLFALEKLVKERLEGKQNLNCI TRTRPLEQKLISEEDLAANDILDYKDDDDKV
Tag:	C-Myc/DDK
Purity:	> 80% as determined by SDS-PAGE and Coomassie blue staining
Concentration:	>0.05 µg/µL as determined by microplate BCA method
Labeling Method:	Labeled with [U- ¹³ C ₆ , ¹⁵ N ₄]-L-Arginine and [U- ¹³ C ₆ , ¹⁵ N ₂]-L-Lysine
Buffer:	25 mM Tris-HCl, 100 mM glycine, pH 7.3
Storage:	Store at -80°C. Avoid repeated freeze-thaw cycles.
Stability:	Stable for 3 months from receipt of products under proper storage and handling conditions.
RefSeq:	NP_001008708
RefSeq Size:	1305
RefSeq ORF:	552
Synonyms:	GCG1
Locus ID:	494143
UniProt ID:	Q8WUX2


[View online »](#)

Cytogenetics: 2p16.2

Summary: The protein encoded by this gene is a gamma-glutamyl cyclotransferase that catalyzes the conversion of glutathione to 5-oxoproline and cysteinylglycine. It is thought that this gene is upregulated in response to endoplasmic reticulum stress and that the glutathione depletion enhances apoptosis. [provided by RefSeq, Sep 2016]

Product images:



Coomassie blue staining of purified CHAC2 protein (Cat# [TP305083]). The protein was produced from HEK293T cells transfected with CHAC2 cDNA clone (Cat# [RC205083]) using MegaTran 2.0 (Cat# [TT210002]).