

Product datasheet for PH305074

Lactate Dehydrogenase B (LDHB) (NM_002300) Human Mass Spec Standard

Product data:

Product Type:	Mass Spec Standards
Description:	LDHB MS Standard C13 and N15-labeled recombinant protein (NP_002291)
Species:	Human
Expression Host:	HEK293
Expression cDNA Clone or AA Sequence:	RC205074
Predicted MW:	36.5 kDa
Protein Sequence:	>RC205074 representing NM_002300 Red =Cloning site Green =Tags(s) MATLKEKLIAPVAEEETVPNNKITVVGVGQVGMACAISILGKSLADELALVDVLEDKLGEMMDLQHGS LFLQTPKIVADKDYSVTANSKIVVVTAGVRQQEGESRLNLVQRNVNVFKFIIPQIVKYSPOCIIIVVSNP VDILTYYTWKLSGLPKHRVIGSGCNLDSARFRYLMAEKLGIHPSSCHGWILGEHGDSSVAVWGSVNVAGV SLQELNPEMGTDNSENWKEVHKMVVESAYEVIKLGKGTNWAIGLSVADLIESMLKNLSRIHPVSTMVKG MYGIENEVFLSLPCILNARGLTSVINQKLKDDEVAQLKKSADTLWDIQDKLKD TRTRPLEQKLI SEEDLAANDILDYKDDDDKV
Tag:	C-Myc/DDK
Purity:	> 80% as determined by SDS-PAGE and Coomassie blue staining
Concentration:	>0.05 µg/µL as determined by microplate BCA method
Labeling Method:	Labeled with [U- ¹³ C ₆ , ¹⁵ N ₄]-L-Arginine and [U- ¹³ C ₆ , ¹⁵ N ₂]-L-Lysine
Buffer:	25 mM Tris-HCl, 100 mM glycine, pH 7.3
Storage:	Store at -80°C. Avoid repeated freeze-thaw cycles.
Stability:	Stable for 3 months from receipt of products under proper storage and handling conditions.
RefSeq:	NP_002291
RefSeq Size:	1336
RefSeq ORF:	1002
Synonyms:	HEL-S-281; LDH-B; LDH-H; LDHBD; TRG-5
Locus ID:	3945



[View online »](#)

UniProt ID: [P07195](#), [Q5U077](#)

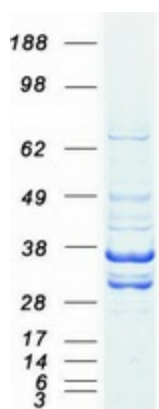
Cytogenetics: 12p12.1

Summary: This gene encodes the B subunit of lactate dehydrogenase enzyme, which catalyzes the interconversion of pyruvate and lactate with concomitant interconversion of NADH and NAD⁺ in a post-glycolysis process. Alternatively spliced transcript variants have been found for this gene. Recent studies have shown that a C-terminally extended isoform is produced by use of an alternative in-frame translation termination codon via a stop codon readthrough mechanism, and that this isoform is localized in the peroxisomes. Mutations in this gene are associated with lactate dehydrogenase B deficiency. Pseudogenes have been identified on chromosomes X, 5 and 13. [provided by RefSeq, Feb 2016]

Protein Families: Druggable Genome

Protein Pathways: Cysteine and methionine metabolism, Glycolysis / Gluconeogenesis, Metabolic pathways, Propanoate metabolism, Pyruvate metabolism

Product images:



Coomassie blue staining of purified LDHB protein (Cat# [TP305074]). The protein was produced from HEK293T cells transfected with LDHB cDNA clone (Cat# [RC205074]) using MegaTran 2.0 (Cat# [TT210002]).