

## Product datasheet for PH305058

### ARSF (NM\_004042) Human Mass Spec Standard

#### Product data:

Product Type:	Mass Spec Standards
Description:	ARSF MS Standard C13 and N15-labeled recombinant protein (NP_004033)
Species:	Human
Expression Host:	HEK293
Expression cDNA Clone or AA Sequence:	RC205058
Predicted MW:	66 kDa
Protein Sequence:	>RC205058 protein sequence Red=Cloning site Green=Tags(s)

MRPRRPLVFMSLVCALLNTCQAHRVHDDKPNIVLIMVDDLIGIDLGCYGNDMRTPHIDRLAREGVRLTQ  
HISAASLCSRSRSAFLTGRYPIRSGMVSSGNRRVIQNLAVPAGLPLNETTLAALLKKQGYSTGLIGKWHQ  
GLNCDRSRSDQCHHPYNYGFDYYYGMPFTLVDSWCPDPSRNTLAFESQLWLCVQLVAIAILTLTFGKLSG  
WVSVPWLLIFSMILFIFLLGYAWFSSHTSPLYWDCLLMRGHEITEQPMKAERAGSIMVKEAISFLERHSK  
ETFLLFFSFLHVHTPLPTTDDFTGTSKHGLYGDNVEEMDSMVGKILDAIDDFGLRNNTLVYFTSDHGGHL  
EARRGHAQLGGWNGIYKGGKMGWEGGIRVPGIVRWPGKVPAGRLIKEPTSLMDILPTVASVSGGSLPQ  
DRVIDGRDLMPLLQGNVRHSEHEFLFHYCGSYLHAVRWIPKDDSGSVWKAHYVTPVFPQPPASGGCYVTSL  
CRCFGEQVTYHNPPLLFDLSRDPSESTPLTPATEPLYDFVIKKVANALKEHQETIVPVTYQLSELNQGRT  
WLKPCCGVFPFCLCDKKEEVSQPRGPNEKR

TRTRPLEQKLISEEDLAANDILDYKDDDDKV

Tag:	C-Myc/DDK
Purity:	> 80% as determined by SDS-PAGE and Coomassie blue staining
Concentration:	>0.05 µg/µL as determined by microplate BCA method
Labeling Method:	Labeled with [U- <sup>13</sup> C <sub>6</sub> , <sup>15</sup> N <sub>4</sub> ]-L-Arginine and [U- <sup>13</sup> C <sub>6</sub> , <sup>15</sup> N <sub>2</sub> ]-L-Lysine
Buffer:	25 mM Tris-HCl, 100 mM glycine, pH 7.3
Storage:	Store at -80°C. Avoid repeated freeze-thaw cycles.
Stability:	Stable for 3 months from receipt of products under proper storage and handling conditions.
RefSeq:	<a href="#">NP_004033</a>
RefSeq Size:	2048
RefSeq ORF:	1770



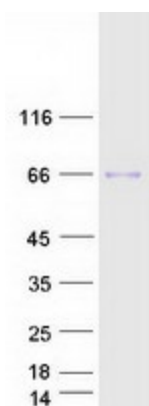
[View online »](#)

**Synonyms:** ASF  
**Locus ID:** 416  
**UniProt ID:** [P54793](#)  
**Cytogenetics:** Xp22.33

**Summary:** This gene is a member of the sulfatase family, and more specifically, the arylsulfatase subfamily. Members of the subfamily share similarity in sequence and splice sites, and are clustered together on chromosome X, suggesting that they are derived from recent gene duplication events. Sulfatases are essential for the correct composition of bone and cartilage matrix. The activity of this protein, unlike that of arylsulfatase E, is not inhibited by warfarin. Multiple alternatively spliced variants, encoding the same protein, have been identified. [provided by RefSeq, Jan 2011]

**Protein Families:** Druggable Genome, Secreted Protein, Transmembrane

### Product images:



Coomassie blue staining of purified ARSF protein (Cat# [TP305058]). The protein was produced from HEK293T cells transfected with ARSF cDNA clone (Cat# [RC205058]) using MegaTran 2.0 (Cat# [TT210002]).