

Product datasheet for PH305049

SLC3A1 (NM_000341) Human Mass Spec Standard

Product data:

Product Type:	Mass Spec Standards
Description:	SLC3A1 MS Standard C13 and N15-labeled recombinant protein (NP_000332)
Species:	Human
Expression Host:	HEK293
Expression cDNA Clone or AA Sequence:	RC205049
Predicted MW:	78.7 kDa
Protein Sequence:	>RC205049 representing NM_000341 Red=Cloning site Green=Tags(s)

MAEDKSKRDSIEMSMKGCQTNNGFVHNEDILEQTPDPSSTDNLKHSTRGILGSQEPDFKGVQPYAGMPK
EVLQFSGQARYRIPREILFWLTVASVLLIAATIAIIALSPKCLDWWQEGPMYQIYPRSFKDSNKDGNG
DLKGIQDKLDYITALNIKTWITSFYKSSLKDFRYGVDFREVDPIFGTMEDFENLVAAIHDKGLKLIID
FIPNHTSDKHIWQLSRTRTGKYTDYYIWHDCHEGKTIIPPNNWLSVYGNSSWHFDEVRNQCYPFHQFMK
EQPDLNFRNPDVQEEIKEILRFWLTGKVDGFLSDAVKFLLEAKHLRDEIQVNKTQIPDVTQYSELVYDF
TTTQVGMHDIVRSFRQTMDOYSTEPGRYRFMGTEAYAESIDRTVMYYGLPFIQEAADFPFNNYLSMLDTVS
GNSVYEVITSWMENMPEGKWPWMIIGGPDSSRLTSRLGNQYVNVMMMLLFTLPGTPIITYGEEIGMGNIV
AANL NESYDINTLRSPMQWDNSSNAGFSEASNTWLPNTNSDYHTVNVQKTPRQPRSAKLYQDL SLLHA
NELLLNRGWFCFLRNDSHYVYVYTRLDGIDRIFIVVLNFGESTLLNLHNMISGLPAKIRIRLSTNSADKG
SKVDTSGIFLDKGEGLIFEHNTKNLLHRQTAFRDRCFVSNRACYSSVLNILYTSC

TRTRPLEQKLI SEEDLAANDILDYKDDDDKV

Tag:	C-Myc/DDK
Purity:	> 80% as determined by SDS-PAGE and Coomassie blue staining
Concentration:	>0.05 µg/µL as determined by microplate BCA method
Labeling Method:	Labeled with [U- 13C6, 15N4]-L-Arginine and [U- 13C6, 15N2]-L-Lysine
Buffer:	25 mM Tris-HCl, 100 mM glycine, pH 7.3
Storage:	Store at -80°C. Avoid repeated freeze-thaw cycles.
Stability:	Stable for 3 months from receipt of products under proper storage and handling conditions.
RefSeq:	NP_000332
RefSeq Size:	2323



[View online »](#)

RefSeq ORF: 2055

Synonyms: ATR1; CSNU1; D2H; NBAT; RBAT

Locus ID: 6519

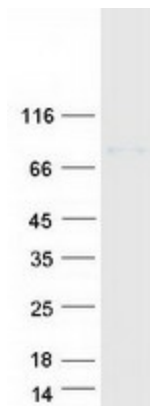
UniProt ID: [Q07837](#), [A0A0S2Z4E1](#)

Cytogenetics: 2p21

Summary: This gene encodes a type II membrane glycoprotein which is one of the components of the renal amino acid transporter which transports neutral and basic amino acids in the renal tubule and intestinal tract. Mutations and deletions in this gene are associated with cystinuria. Alternatively spliced transcript variants have been described, but their biological validity has not been determined. [provided by RefSeq, Jul 2008]

Protein Families: Druggable Genome, Transmembrane

Product images:



Coomassie blue staining of purified SLC3A1 protein (Cat# [TP305049]). The protein was produced from HEK293T cells transfected with SLC3A1 cDNA clone (Cat# [RC205049]) using MegaTran 2.0 (Cat# [TT210002]).