

Product datasheet for **PH305047**

PPP1R1C (NM_001080545) Human Mass Spec Standard

Product data:

Product Type:	Mass Spec Standards
Description:	PPP1R1C MS Standard C13 and N15-labeled recombinant protein (NP_001074014)
Species:	Human
Expression Host:	HEK293
Expression cDNA Clone or AA Sequence:	RC205047
Predicted MW:	12.3 kDa
Protein Sequence:	>RC205047 protein sequence Red =Cloning site Green =Tags(s) MEPNSPKKIQFAVPVFQSQIAPEAAEQIRKRRPTASLVILNEHNPEIDDKRGPNTQGELQNASPKQRK QSVYTPPTIKGVKHLKGQNESAFPEEEEGTNEREEQRDH TRTRPLEQKLISEEDLAANDILDYKDDDDKV
Tag:	C-Myc/DDK
Purity:	> 80% as determined by SDS-PAGE and Coomassie blue staining
Concentration:	>0.05 µg/µL as determined by microplate BCA method
Labeling Method:	Labeled with [U- ¹³ C ₆ , ¹⁵ N ₄]-L-Arginine and [U- ¹³ C ₆ , ¹⁵ N ₂]-L-Lysine
Buffer:	25 mM Tris-HCl, 100 mM glycine, pH 7.3
Storage:	Store at -80°C. Avoid repeated freeze-thaw cycles.
Stability:	Stable for 3 months from receipt of products under proper storage and handling conditions.
RefSeq:	NP_001074014
RefSeq Size:	1078
RefSeq ORF:	327
Synonyms:	IPP5
Locus ID:	151242
UniProt ID:	Q8WVI7
Cytogenetics:	2q31.3-q32.1



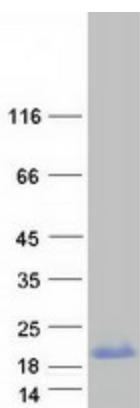
[View online »](#)

Summary:

Protein phosphatase-1 (PP1) is a major serine/threonine phosphatase that regulates a variety of cellular functions. PP1 consists of a catalytic subunit (see PPP1CA; MIM 176875) and regulatory subunits that determine the subcellular localization of PP1 or regulate its function. PPP1R1C belongs to a group of PP1 inhibitory subunits that are themselves regulated by phosphorylation (Wang et al., 2008 [PubMed 18310074]).[supplied by OMIM, Feb 2010]

Protein Families:

Druggable Genome, Phosphatase

Product images:

Coomassie blue staining of purified PPP1R1C protein (Cat# [TP305047]). The protein was produced from HEK293T cells transfected with PPP1R1C cDNA clone (Cat# [RC205047]) using MegaTran 2.0 (Cat# [TT210002]).