

## Product datasheet for PH305033

### RAB2B (NM\_032846) Human Mass Spec Standard

#### Product data:

Product Type:	Mass Spec Standards
Description:	RAB2B MS Standard C13 and N15-labeled recombinant protein (NP_116235)
Species:	Human
Expression Host:	HEK293
Expression cDNA Clone or AA Sequence:	RC205033
Predicted MW:	24.2 kDa
Protein Sequence:	>RC205033 protein sequence Red=Cloning site Green=Tags(s)  MTYAYLFKYIIIGDTGVGKSCLLLQFTDKRFQPVHDLTIGVEFGARMVNIIDGKQIKLQIWDTAGQESFRS ITRSYYRGAAGALLVYDITRRETFNHLTSWLEDARQHSSSNMVMILIGNKSDLESRRDVKREEGEAFARE HGLIFMETSAKTACNVEEAFINTAKEIYRKIQQGLFDVHNEANGIKIGPQQSISTSVGPSASQRNSRDIG SNSGCC  TRTRPLEQKLI SEEDLAANDILDYKDDDDKV
Tag:	C-Myc/DDK
Purity:	> 80% as determined by SDS-PAGE and Coomassie blue staining
Concentration:	>0.05 µg/µL as determined by microplate BCA method
Labeling Method:	Labeled with [U- <sup>13</sup> C <sub>6</sub> , <sup>15</sup> N <sub>4</sub> ]-L-Arginine and [U- <sup>13</sup> C <sub>6</sub> , <sup>15</sup> N <sub>2</sub> ]-L-Lysine
Buffer:	25 mM Tris-HCl, 100 mM glycine, pH 7.3
Storage:	Store at -80°C. Avoid repeated freeze-thaw cycles.
Stability:	Stable for 3 months from receipt of products under proper storage and handling conditions.
RefSeq:	<u>NP_116235</u>
RefSeq Size:	2956
RefSeq ORF:	648
Locus ID:	84932
UniProt ID:	<u>Q8WUD1</u>
Cytogenetics:	14q11.2

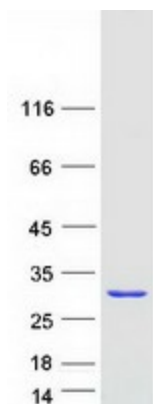


[View online »](#)

**Summary:** Members of the Rab protein family are nontransforming monomeric GTP-binding proteins of the Ras superfamily that contain 4 highly conserved regions involved in GTP binding and hydrolysis. Rab proteins are prenylated, membrane-bound proteins involved in vesicular fusion and trafficking; see MIM 179508.[supplied by OMIM, Apr 2006]

**Protein Families:** Druggable Genome

**Product images:**



Coomassie blue staining of purified RAB2B protein (Cat# [TP305033]). The protein was produced from HEK293T cells transfected with RAB2B cDNA clone (Cat# [RC205033]) using MegaTran 2.0 (Cat# [TT210002]).