

## Product datasheet for PH305023

### CCDC12 (NM\_144716) Human Mass Spec Standard

#### Product data:

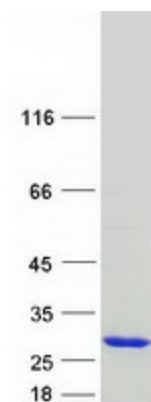
Product Type:	Mass Spec Standards
Description:	CCDC12 MS Standard C13 and N15-labeled recombinant protein (NP_653317)
Species:	Human
Expression Host:	HEK293
Expression cDNA Clone or AA Sequence:	RC205023
Predicted MW:	19.2 kDa
Protein Sequence:	>RC205023 protein sequence Red=Cloning site Green=Tags(s)  MEATTAGVGRLEEEALRRKERLKALREKTGRKDKEDGEPKTKHLREEEEEGEKHRELRLRNYVPEDEDLK KRRVPQAKPVAVEEKVKEQLEAAKPEPVIEEVDLANLAPRKPDWDLKRDVAKKLEKLLKRTQRAIAELIR ERLKGQEDSLASAVDAATEQKTCDS  TRTRPLEQKLISEEDLAANDILDYKDDDDKV
Tag:	C-Myc/DDK
Purity:	> 80% as determined by SDS-PAGE and Coomassie blue staining
Concentration:	>0.05 µg/µL as determined by microplate BCA method
Labeling Method:	Labeled with [U- 13C6, 15N4]-L-Arginine and [U- 13C6, 15N2]-L-Lysine
Buffer:	25 mM Tris-HCl, 100 mM glycine, pH 7.3
Storage:	Store at -80°C. Avoid repeated freeze-thaw cycles.
Stability:	Stable for 3 months from receipt of products under proper storage and handling conditions.
RefSeq:	<a href="#">NP_653317</a>
RefSeq Size:	1035
RefSeq ORF:	498
Locus ID:	151903
UniProt ID:	<a href="#">J3KR35</a>
Cytogenetics:	3p21.31



[View online »](#)

Protein Pathways: Spliceosome

### Product images:



Coomassie blue staining of purified CCDC12 protein (Cat# [TP305023]). The protein was produced from HEK293T cells transfected with CCDC12 cDNA clone (Cat# [RC205023]) using MegaTran 2.0 (Cat# [TT210002]).