

Product datasheet for PH305022

TMED6 (NM_144676) Human Mass Spec Standard

Product data:

Product Type:	Mass Spec Standards
Description:	TMED6 MS Standard C13 and N15-labeled recombinant protein (NP_653277)
Species:	Human
Expression Host:	HEK293
Expression cDNA Clone or AA Sequence:	RC205022
Predicted MW:	27.6 kDa
Protein Sequence:	>RC205022 protein sequence Red=Cloning site Green=Tags(s) MSPLLFGAGLVVLNVLVTSARSQKTEPLSGSGDQPLFRGADRYDFAIMIPPGGTECFWQFAHQGTGYFYFSC EVQRTVGMShDRHVAATAHNPQGFLIDTSQGVRGQINFSTQETGFYQLCLSNQHNHFGSVQVYLNFGVY EGPETDHKQKERKQLNDTLDAIEDGTQKVQNNIFHMWRYNFARMRKMAFFLIQSNYNYVNWSTAQSL VIILSGILQLYFLKRLFNVPTTTDTKKPRC TRTRPLEQKLISEEDLAANDILDYKDDDDKV
Tag:	C-Myc/DDK
Purity:	> 80% as determined by SDS-PAGE and Coomassie blue staining
Concentration:	>0.05 µg/µL as determined by microplate BCA method
Labeling Method:	Labeled with [U- 13C6, 15N4]-L-Arginine and [U- 13C6, 15N2]-L-Lysine
Buffer:	25 mM Tris-HCl, 100 mM glycine, pH 7.3
Storage:	Store at -80°C. Avoid repeated freeze-thaw cycles.
Stability:	Stable for 3 months from receipt of products under proper storage and handling conditions.
RefSeq:	NP_653277
RefSeq Size:	940
RefSeq ORF:	720
Synonyms:	p24g5; PRO34237; SPL9146
Locus ID:	146456
UniProt ID:	Q8WW62

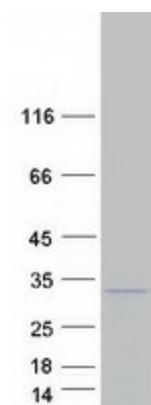


[View online »](#)

Cytogenetics: 16q22.1

Protein Families: Transmembrane

Product images:



Coomassie blue staining of purified TMED6 protein (Cat# [TP305022]). The protein was produced from HEK293T cells transfected with TMED6 cDNA clone (Cat# [RC205022]) using MegaTran 2.0 (Cat# [TT210002]).