

Product datasheet for PH305013

SSB (NM_003142) Human Mass Spec Standard

Product data:

Product Type:	Mass Spec Standards
Description:	SSB MS Standard C13 and N15-labeled recombinant protein (NP_003133)
Species:	Human
Expression Host:	HEK293
Expression cDNA Clone or AA Sequence:	RC205013
Predicted MW:	46.8 kDa
Protein Sequence:	>RC205013 protein sequence Red=Cloning site Green=Tags(s)
	<p>MAENGDNKMAALEAKICHQIEYYFGDFNLPRDKFLKEQIKLDEGWVPLEIMIKFNRLNRLTTDFNVIVE ALSKSKAELMEISEDKTKIRRSPSKPLPEVTDEYKNDVKNRSVYIKGFPTDALTDDIKEWLEDKGQVLNI QMRRTLHKAFKGSIFVVFDIESAKKFVETPGQKYKEDLLILFKDDYFAKNEERKQNKVEAKLRAKQE QEAKQKLEEDAEMKSLEEKIGCLLKFSGLDDQTCREDLHILFSNHGEIKWIDFVRGAKEGIIILFKEKAK EALGKAKDANNGLQLRNKEVTWEVLEGEVEKEALKKIIEDQQESLNKWKSGRRFKGKGKGNKAAQPGS GKGVQFQGGKTKFASDDEHDEHDENGATGPVVRAREETDKEEPASKQQKTENGAGDQ</p> <p>TRTRPLEQKLISEEDLAANDILDYKDDDDKV</p>
Tag:	C-Myc/DDK
Purity:	> 80% as determined by SDS-PAGE and Coomassie blue staining
Concentration:	>0.05 µg/µL as determined by microplate BCA method
Labeling Method:	Labeled with [U- ¹³ C ₆ , ¹⁵ N ₄]-L-Arginine and [U- ¹³ C ₆ , ¹⁵ N ₂]-L-Lysine
Buffer:	25 mM Tris-HCl, 100 mM glycine, pH 7.3
Storage:	Store at -80°C. Avoid repeated freeze-thaw cycles.
Stability:	Stable for 3 months from receipt of products under proper storage and handling conditions.
RefSeq:	<u>NP_003133</u>
RefSeq Size:	1719
RefSeq ORF:	1224
Synonyms:	La; La/SSB; LARP3
Locus ID:	6741



[View online »](#)

UniProt ID: [P05455](#)

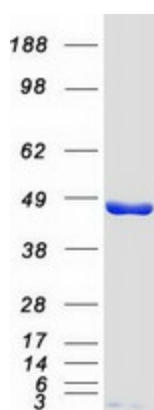
Cytogenetics: 2q31.1

Summary: The protein encoded by this gene is involved in diverse aspects of RNA metabolism, including binding and protecting poly(U) termini of nascent RNA polymerase III transcripts from exonuclease digestion, processing 5' and 3' ends of pre-tRNA precursors, acting as an RNA chaperone, and binding viral RNAs associated with hepatitis C virus. Autoantibodies reacting with this protein are found in the sera of patients with Sjogren syndrome and systemic lupus erythematosus. Alternative promoter usage results in two different transcript variants which encode the same protein. [provided by RefSeq, Jun 2014]

Protein Families: Stem cell - Pluripotency, Transcription Factors

Protein Pathways: Systemic lupus erythematosus

Product images:



Coomassie blue staining of purified SSB protein (Cat# [TP305013]). The protein was produced from HEK293T cells transfected with SSB cDNA clone (Cat# [RC205013]) using MegaTran 2.0 (Cat# [TT210002]).