

Product datasheet for PH305008

Tubulin (TUBA1B) (NM_006082) Human Mass Spec Standard

Product data:

Product Type:	Mass Spec Standards
Description:	TUBA1B MS Standard C13 and N15-labeled recombinant protein (NP_006073)
Species:	Human
Expression Host:	HEK293
Expression cDNA Clone or AA Sequence:	RC205008
Predicted MW:	50.2 kDa
Protein Sequence:	>RC205008 protein sequence Red=Cloning site Green=Tags(s)

MRECISIHVGQAGVQIGNACWELYLEHGIQPDGQMP SDKTIGGGDSFNTFFSETGAGKHVPRAVFVDL
EPTVIDEVRTGTYRQLFHPEQLITGKEDAANNYARGHYTIGKEIIDLVLDRIKRLADQCTGLQGFLVFHS
FGGGTGSFTSLLMERLSVDYGGKSKLEFSIYPAPQVSTAVVEPYNSILTTHTTLEHSDCAFVMDNEAIY
DICRRNLDIERPTYTNLNLISQIVSSITASLRFDGALNVDLTFEQTNLVPYPRIHFPLATYAPVISA EK
AYHEQLSVAEITNACFEPANQMVKCDPRHGKYMACECLLYRGDVVPKDVNAAIATIKTKRSIQFVDWCPTG
FKVGINYQPPTVVPGGDLAKVQRAVCMLSNNTTAIAEAWARLDHKFDLMYAKRAVFVHWYVGEEMEEGEFSE
AREDMAALEKDYEEVGVDSVEGEGEEEGEEY

TRTRPLEQKLI SEEDLAANDILDYKDDDDKV

Tag:	C-Myc/DDK
Purity:	> 80% as determined by SDS-PAGE and Coomassie blue staining
Concentration:	>0.05 µg/µL as determined by microplate BCA method
Labeling Method:	Labeled with [U- ¹³ C ₆ , ¹⁵ N ₄]-L-Arginine and [U- ¹³ C ₆ , ¹⁵ N ₂]-L-Lysine
Buffer:	25 mM Tris-HCl, 100 mM glycine, pH 7.3
Storage:	Store at -80°C. Avoid repeated freeze-thaw cycles.
Stability:	Stable for 3 months from receipt of products under proper storage and handling conditions.
RefSeq:	<u>NP_006073</u>
RefSeq Size:	1771
RefSeq ORF:	1353
Synonyms:	K-ALPHA-1



[View online »](#)

Locus ID: 10376

UniProt ID: [P68363](#)

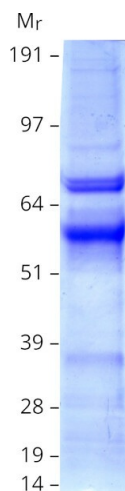
Cytogenetics: 12q13.12

Summary: Tubulin is the major constituent of microtubules. It binds two moles of GTP, one at an exchangeable site on the beta chain and one at a non-exchangeable site on the alpha chain. [UniProtKB/Swiss-Prot Function]

Protein Families: Druggable Genome

Protein Pathways: Gap junction, Pathogenic Escherichia coli infection

Product images:



Coomassie blue staining of purified TUBA1B protein (Cat# [TP305008]). The protein was produced from HEK293T cells transfected with TUBA1B cDNA clone (Cat# [RC205008]) using MegaTran 2.0 (Cat# [TT210002]).