

Product datasheet for PH305005

P2Y12 (P2RY12) (NM_022788) Human Mass Spec Standard

Product data:

Product Type:	Mass Spec Standards
Description:	P2RY12 MS Standard C13 and N15-labeled recombinant protein (NP_073625)
Species:	Human
Expression Host:	HEK293
Expression cDNA Clone or AA Sequence:	RC205005
Predicted MW:	39.4 kDa
Protein Sequence:	>RC205005 protein sequence Red =Cloning site Green =Tags(s)

MQAVDNLTSA PGNTSLCTRDYKITQVLFPLLYTVLFFVGLITNGLAMRIFFQIRSKSNFIIFLKNTVISD
 LLMILTFPFKILSDAKLGTGPLRTFVCQVTSVIFYFTMYISISFLGLITIDRYQKTTRPFKTSNPKNLLG
 AKILSVVIWAFMFLSLPNMILTNRQPRDKNVKKCSFLKSEFGLVWHEIVNYICQVIFWINFLIVICYT
 LITKELYRSYVRTRGVGKVPKKVNVKVFIIIAVFFICFVPFHARIPYTLSQTRDVFDC TAENTLFYVK
 ESTLWLTSLNACLDPFIIYFFLCKSFRNSLISMLKCPNSATSLSQDNRKKEQDGGDPNEETPM

TRTRPLEQKLISEEDLAANDILDYKDDDDKV

Tag:	C-Myc/DDK
Purity:	> 80% as determined by SDS-PAGE and Coomassie blue staining
Concentration:	>0.05 µg/µL as determined by microplate BCA method
Labeling Method:	Labeled with [U- ¹³ C ₆ , ¹⁵ N ₄]-L-Arginine and [U- ¹³ C ₆ , ¹⁵ N ₂]-L-Lysine
Buffer:	25 mM Tris-HCl, 100 mM glycine, pH 7.3
Storage:	Store at -80°C. Avoid repeated freeze-thaw cycles.
Stability:	Stable for 3 months from receipt of products under proper storage and handling conditions.
RefSeq:	<u>NP_073625</u>
RefSeq Size:	2318
RefSeq ORF:	1026
Synonyms:	ADPG-R; BDPLT8; HORK3; P2T(AC); P2Y(12)R; P2Y(AC); P2Y(ADP); P2Y(cyc); P2Y12; SP1999
Locus ID:	64805


[View online »](#)

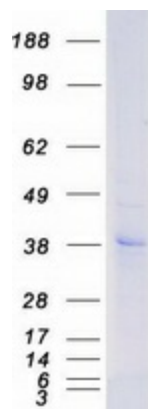
UniProt ID: Q9H244, A8K7T1

Cytogenetics: 3q25.1

Summary: The product of this gene belongs to the family of G-protein coupled receptors. This family has several receptor subtypes with different pharmacological selectivity, which overlaps in some cases, for various adenosine and uridine nucleotides. This receptor is involved in platelet aggregation, and is a potential target for the treatment of thromboembolisms and other clotting disorders. Mutations in this gene are implicated in bleeding disorder, platelet type 8 (BDPLT8). Alternative splicing results in multiple transcript variants of this gene. [provided by RefSeq, Jul 2013]

Protein Families: Druggable Genome, GPCR, Transmembrane

Product images:



Coomassie blue staining of purified P2RY12 protein (Cat# [TP305005]). The protein was produced from HEK293T cells transfected with P2RY12 cDNA clone (Cat# [RC205005]) using MegaTran 2.0 (Cat# [TT210002]).